



Title III/ESOL Update

November 2024

Emily Scott

Education Program Consultant
Special Education and Title Services Team
ESOL/Title III

Email: escott@ksde.org

Phone: 785.296.4941



2024-2025 Webinar Schedule

~~August 15~~

~~September 12~~

~~October 17~~

November 14

January 16

February 13

April 17

May 15

- Webinars will begin at 1:00 p.m.
- Register @ www.ksdetasn.org
- Any links referenced during the webinar will be included, along with the Zoom link.
- Updates will be recorded and available on the TASN website.



Agenda



- Introduction of new ESOL/Title III Program Consultant
- Reminders
 - ESOL Endorsement
- Updates
 - U.S. Department of Education (Office of English Language Acquisition)
 - WIDA Alternate ACCESS
 - Policy Update: KELPA Score Reports
- Strategy Spotlight
- Additional Resources & PD Opportunities

ESOL/Title III Program Consultant



- Bachelors of Art: Mass Media (Washburn University)
- Masters of Science in Education: Curriculum & Instruction – TESOL Emphasis (KU)
- Taught English in the Republic of Georgia
- 1 year as ESL Para
- Certified ESOL Teacher for 11 years
 - Charlotte, NC
 - Liberal, KS
 - Topeka, KS
- Excited to meet everyone and start collaborating!!

Reminder



ESOL Endorsement

- To transition higher education institutions and districts to the new requirements, the Teacher Licensure team will continue to accept and process ***Test Only*** applications to add the ESOL endorsement through December 31, 2024.
- English to Speakers of Other Languages Praxis test may be found at www.ets.org
- Effective date of the Test Plus Requirement is January 1, 2025.

Questions about Licensure?



Mr. Shane Carter

Director

Teacher Licensure

Phone: (785) 296-2288

TLALicense@ksde.org





Chief Council of State School Officers (CCSSO) National Conference

English Learners Collaborative Update

U.S. Dept. of Education Updates

Office of English Language Acquisition (OELA) Digital Badges

- Digital badges are a way OELA recognizes individuals who support and promote multilingualism through their professional development activities.
- Badges are awarded to those who display a strong commitment to advocating for multilingualism in their work or educational settings.



The graphic features the OELA logo at the top center, with the text "Office of English Language Acquisition" below it. The main title "Multilingualism Digital Badges" is prominently displayed. Below the title, four digital badge levels are shown in a 2x2 grid. Each badge is circular with a yellow border and a central icon: a seedling for Level 1, a growing plant for Level 2, a tree for Level 3, and a large tree for Level 4. To the right of the badges is a large QR code. Below the QR code, text instructs users to scan the code to access the badge request form.

OELA
Office of English Language Acquisition

Multilingualism Digital Badges

Level 1
Attend 3 webinars
Ally

Level 2
Attend 6 webinars
Advocate

Level 3
Attend 12 webinars
Champion

Level 4
Available after earning all three micro badges
Superpower

Please scan this QR code to access the badge request form.



U.S. Dept. of Education Webinars

WEBINAR

OELA Newcomer Toolkit: Creating Welcoming Environments for Newcomer Students

Wednesday, November 6, 2024
3:00 – 4:30 PM ET

Panelists:


Dr. Rolando Merchán
Multilingual Director, Pasadena
Independent School District


Lara Evangelista
Executive Director, Internationals Network
for Public Schools

Join us for a comprehensive webinar series on the Department of Education's Office of English Language Acquisition (OELA) Newcomer Toolkit. Part 1 of the series will introduce the updated Newcomer Toolkit, discuss the diversity of the newcomer student population, and present examples of how to create a welcoming environment for newcomer English learners (ELs). The panelists will highlight both research and

REGISTER NOW!
https://us01web.zoom.us/join/register?wn_oq2Ly0wGp6Dm71s6718Gg



- [Newcomer Toolkit: Creating Welcoming Environments for Newcomer Students Part I](#) Nov 6, 2024, 3:00 PM (ET)
- [Newcomer Toolkit: Supporting Newcomers' Social, Emotional, and Mental Health Needs Part II](#) December 12, 2024 , 2:00 PM (ET)
- Newcomer Toolkit: Providing High-Quality Instruction and Support for Newcomer Students Part III: January 14, 2025

Click [here](#) to view upcoming and past webinars.



U.S. Dept. of Education Update Additional Webinar (Spanish)

- The U.S. Department of Education, the office for Civil Rights, and the Office of English Language Acquisition (OELA) will share information about the Office of Civil Rights.
- Participants will learn about:
 - The mission of the Office of Civil Rights and the federal laws it enforces
 - Activities and jurisdiction
 - Complaint evaluation, investigation, and resolution process



LA EMBAJADA DE MÉXICO EN COLABORACIÓN CON
EL DEPARTAMENTO DE EDUCACIÓN DE LOS ESTADOS
UNIDOS LE INVITAN AL TALLER:

**PRESENTACIÓN DE
DEPARTAMENTO DE DERECHOS
CIVILES**

Talleres de Capacitación sobre el Kit
de Herramientas para las Familias de
Estudiantes de Inglés

5 de diciembre de 2024
3:30pm-4:45pm Est

EN LINEA

[Webinar Registration - Zoom](#)



U.S. Dept. of Education Toolkits



Newcomer Toolkit

https://ncela.ed.gov/sites/default/files/2023-06/NewcomerToolkit-06222023-508_OELA.pdf

English Learner Toolkit

https://ncela.ed.gov/sites/default/files/legacy/files/english_learner_toolkit/OELA_2017_ELsToolkit_508C.pdf

English Learner Family Toolkit (Available to download in English, Arabic, Chinese, Spanish)

<https://ncela.ed.gov/educator-support/toolkits/family-toolkit>



WIDA Alternate ACCESS English Language Proficiency (ELP) Assessment

WIDA Alternate ACCESS ELP for Students with a Most Significant Cognitive Disability



Student has a home language survey indicating language other than English and DLM eligible



Will take place February 3-March 14, 2025, for students in Kdg-12th grade



Paper format, not computer based



Students must have a most significant cognitive disability, most significant deficits in adaptive behavior, and are an English Language learner



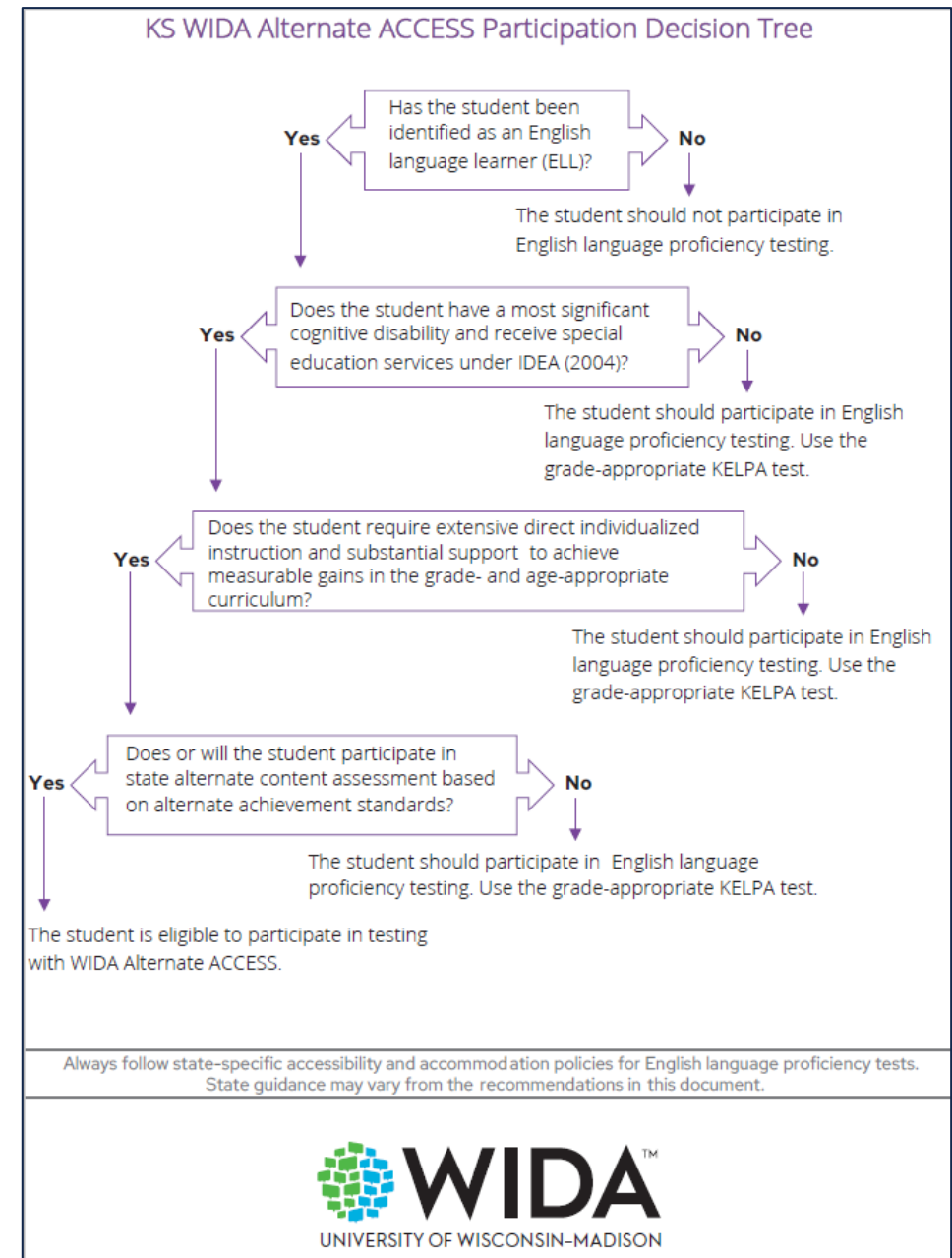
Use the same criteria as DLM and the alt early literacy screener to identify which students need the Alt ACCESS



Tests students' English Proficiency in the four domains: listening, reading, speaking, and writing



KS WIDA Alt ACCESS Participation Decision Tree



KSDE's State Page on WIDA Website

[KSDE's state page](#)

- Users can navigate to the page using the Member/State Pages dropdown menu located in the upper right corner of all pages on the [public-facing WIDA website](#).
 - Testing dates
 - Contact information
 - Kansas WIDA Alternate ACCESS Checklist
 - State Testing Requirements
 - Test Preparation and Training
 - Manuals, Guides, and Test Materials
- When accessing the link for Kansas specific manuals (*Test Administrator Manual*, *Test Coordinator Manual*, and *Accessibility and Accommodations Manual*), **users will be directed to the WIDA Secure Portal** to login.



New WIDA Alternate Can Do Descriptors

Hot off the WIDA presses!

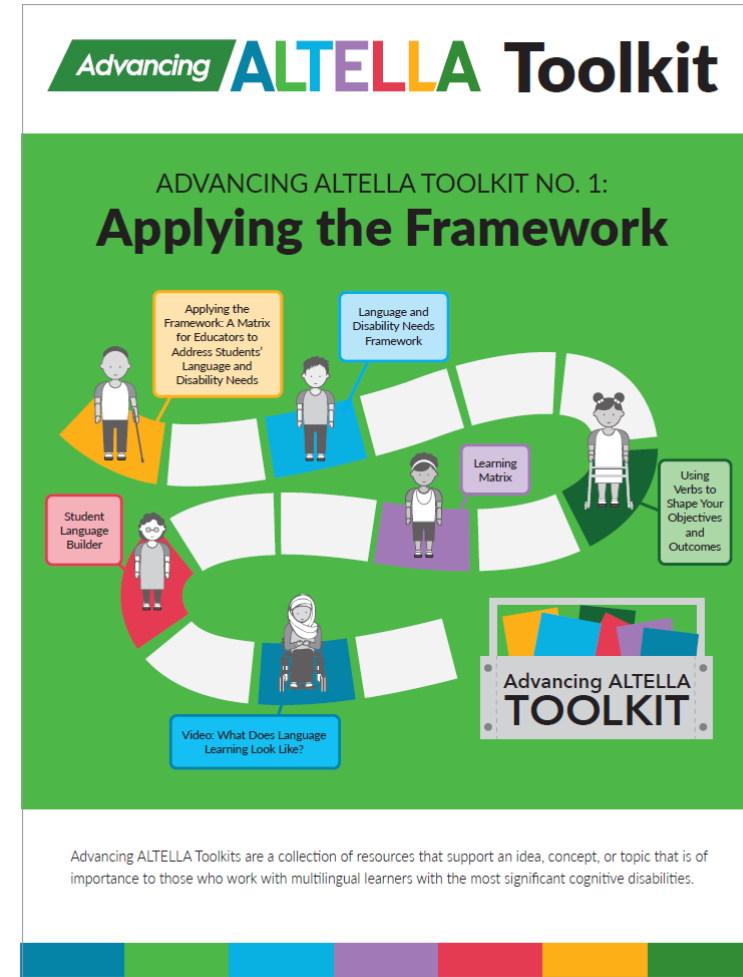
The brand-new **Alternate Can Do Descriptors** are the first-ever Can Do Descriptors for multilingual learners with the most significant cognitive disabilities. They exemplify what students can do with communication and language at various stages of English language development.

Find the Alternate Can Do Descriptors and more information about how to use them on the [Can Do Descriptors](#) webpage.



Advancing ALTELLA Resources

- Advancing ALTELLA Toolkit No. 1: Applying the Framework (PDF)
 - Research Brief
 - Verb List
 - Student Language Builder
 - Matrix
 - Link to the video
- Presentation Slides: Putting the Toolkit into Practice



November WIDA Assessment Webinars

- WIDA Alternate ACCESS for New Test Administrators
 - Tuesday, November 19 at 1:00pm-2:00pm CT
- Learn more and add upcoming webinars to your calendar on the [Webinars](#) page (login required).
- The recordings for Assessment Webinars are posted to the WIDA Secure Portal on the Webinars page within a week of the presentation.
- Technology-related webinar links can also be found in [WIDA AMS](#). On the landing page, select **My Applications > General Information > Documents** and filter the Document Type by **Memos/Documents**.



Need Access?

Contact Chelsea Pelfrey for access to the WIDA Secure Portal or DRC Insight/WIDA AMS (*District Test Coordinators ONLY*)

Chelsea Pelfrey
Assessment Coordinator
Career, Standards and Assessment Services
(785) 296-0040
cpelfrey@ksde.org

All other test administration questions?

Contact Cary Rogers



Contact Information



Cary Rogers
Education Program Consultant
Special Education and Title Services
(785) 296-0916
crogers@ksde.org

The Kansas State Department of Education does not discriminate on the basis of race, color, national origin, sex, disability or age in its programs and activities and provides equal access to the Boy Scouts and other designated youth groups. The following person has been designated to handle inquiries regarding the nondiscrimination policies: KSDE General Counsel, Office of General Counsel, KSDE, Landon State Office Building, 900 S.W. Jackson, Suite 102, Topeka, KS 66612, (785) 296-3201.





Policy Update

KELPA/WIDA Alt ACCESS Score Reports

KELPA/WIDA Alt ACCESS Score Reports



KSDE staff will no longer send KELPA score reports via encrypted email to staff in Kansas school districts. Score reports should be printed each spring and placed in student cumulative files. Please keep student files up to date, as documents pertaining to ESOL services and supports are critical should a student transfer to another school. If a current KELPA report is not in the file, the receiving school district will need to contact the former school district or screen the student using the KELPA screener. – **EFFECTIVE October 7, 2024**



Strategy Spotlight

Asset-Based Approach

Value – Relationships fostered based on mutual respect.

Expect – Having clear success criteria and high expectations to strategically help ELs thrive with high-level learning.

Engage – Use of a variety of strategies to reach students.

Observe – Every task is an opportunity to gather formative data!

Support – Be strategic about using or losing scaffolds (by looking at the data!)

Reflect – “What will I change about *my* instruction to ensure this student succeeds?”



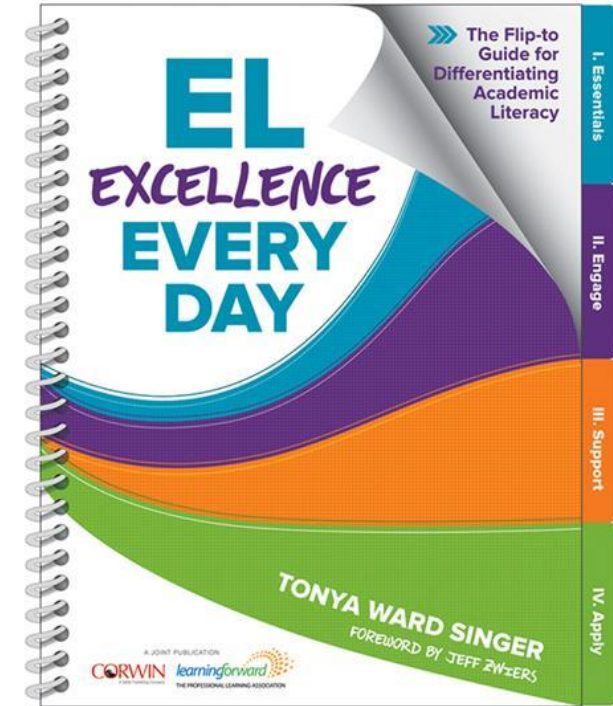
Flip-to Guide for Differentiating



Tonya Ward Singer



The author is an EL and literacy expert who consults internationally to help K-12 teachers excel in reaching all learners.



ISBN 978-1-5063-7787-2

This recommendation is made solely by the ESOL/Title III Program Consultant and does not imply endorsement by KSDE.



Professional Development Opportunities

Save the Date!

Additional information and registration to be sent out later!

ESOL Innovations: *A State-Wide Summit for EL Coordinators & Administrators* April 23rd - Lawrence, Kansas

A small group of district leaders across the state are collaborating with Greenbush and Ottawa University to hold a conference **designed for Kansas ESOL coordinators and directors.**

Sessions include:

- Designing MTSS intervention models and materials that are appropriate for ELs
- FastBridge and other assessments – When are they appropriate for multilingual learners?
- Co-teaching models for meeting the needs of your ELs
- Identifying and meeting the needs of dual-identified students (SPED and EL)
- Supporting students with SLIFE (Students with Limited or Interrupted Formal Education) needs
- Strengthening Tier I instruction





Resources & Reminders

Resources



ESOL/Bilingual Education Program Guidance Document
<https://www.ksde.org/Portals/0/Title/ESOL/ESOLProgramGuidance.pdf>

ESOL Education Resources

<https://www.ksde.org/Agency/Division-of-Learning-Services/Special-Education-and-Title-Services/Title-Services/Title-III-State-ESOL/ESOL-Education-Resources>

Title III State ESOL

<https://www.ksde.org/Agency/Division-of-Learning-Services/Special-Education-and-Title-Services/Title-Services/Title-III-State-ESOL>

2024-2025 Kansas Assessment Program Overview

https://ksassessments.org/sites/default/files/documents/2024-25_Kansas_Assessments_Overview_Calendar.pdf

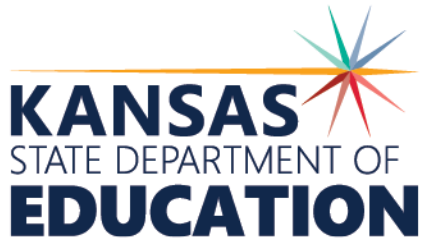
Plyler v. Doe [457 W.S. 202(1982)] Reference

<https://www.idra.org/resource-center/immigrant-students-rights-to-attend-public-schools-2/>

Reminders



- *If you have a new student enroll, please remember to complete the KELPA screener and send home the Parent Notification Letter within 10 school days.*
- The next webinar date is **January 16th, 2025**.
 - Please register @ www.ksdetasn.org.



Thank you for attending!
I look forward to collaborating to
support students and families in
Kansas!

Contact Information



Emily Scott
ESOL/Title III Education Program Consultant
Special Education and Title Services Team
(785) 296-4941
escott@ksde.org

The Kansas State Department of Education does not discriminate on the basis of race, color, national origin, sex, disability or age in its programs and activities and provides equal access to the Boy Scouts and other designated youth groups. The following person has been designated to handle inquiries regarding the nondiscrimination policies: KSDE General Counsel, Office of General Counsel, KSDE, Landon State Office Building, 900 S.W. Jackson, Suite 102, Topeka, KS 66612, (785) 296-3201.

