



PK-12 Accreditation Update
January 13, 2015



Advisory Council
Recommendations in Place

- ✓ District level accreditation model
- ✓ The Five Rs
- ✓ Rubrics for four of the Rs
- ✓ Four components under each R (with Results "R" using College- and Career-Ready Results)
- ✓ Public transparency through KSDE dashboard
- ✓ KSDE training of all members of Outside Validation Teams
- ✓ Five-year cycle




TODAY

1. Requirements
2. Process
3. What's Next



Accreditation Requirements



QPA Quality Criteria are Prerequisite to New Model

- ✓ School Improvement Plan (incl. staff dev.)
- ✓ External Assistance Team
- ✓ Locally determined assessments (aligned)
- ✓ Teacher training re: standards, assessments
- ✓ Teacher licensure requirements
- ✓ Substitute teacher requirements
- ✓ Minimum enrollment
- ✓ Transfer of credit policy
- ✓ Athletic participation policies
- ✓ Minimum graduation requirements
- ✓ Regents/Honor Scholar curricula
- ✓ Specified programs and services supporting learning and growth



New Model Requirements

- **Stakeholder Participation**
- Evidence (data, artifacts) of **CCR Results**
- Goal Areas (**Framework - 5 Rs**)
- Building Goals/Action Plans
- **District Leadership Goals/Leadership Plans**
- Professional Learning
- Implementation
- Mid-implementation Review
- Post-implementation Analysis
- On-site Visit
- Accreditation Rating
- **Public Transparency throughout process**



Stakeholder Participation

District Employees


- ✓ Building Leadership Team
- ✓ District Leadership Team

Other Stakeholders

- ✓ Building Site Council
- ✓ District Site Council

Outside Validation


- ✓ Outside Validation Team
- ✓ KSDE oversight
- ✓ Public transparency



Framework/CCR Results


KSDE Accreditation Advisory Council recommendation Dec. 1, 2014:

RELATIONSHIPS	RELEVANCE	RESPONSIVE CULTURE	RIGOR	RESULTS
<p><i>Defining Relationships:</i> "a state of interconnectedness – among people, curricula, programs, projects, and communities – is critical in establishing connections that result in high performing learning environments" (KSDE, 2010, p. 40)</p> <ul style="list-style-type: none"> • Staff • Students • Families • Community 	<p><i>Defining Relevance:</i> "The power and ability of specific information to meet the needs of its user – strengthens learner motivation and allows learning to become more engaging, empowering, connected, applicable to the real world, and socially significant" (KSDE, 2010, p. 42)</p> <ul style="list-style-type: none"> • Curriculum • Instruction • Student Engagement • Technology 	<p><i>Defining Responsive Culture:</i> "one that readily reacts to suggestions, influences, appeals, efforts, or opportunities – empowers all stakeholders to become respectful of, responsible for, and involved in learning, the learning process, and the learning community" (KSDE, 2010, p. 48)</p> <ul style="list-style-type: none"> • Leadership • Early Childhood • District Climate • Nutrition and Wellness 	<p><i>Defining Rigor:</i> "a relentless pursuit of that which challenges and provides opportunity to demonstrate growth and learning – is essential in addressing the needs of our rapidly expanding society and world" (KSDE, 2010, p. 44)</p> <ul style="list-style-type: none"> • Career & Technical Ed • Professional Learning • Resources • Data 	<p><i>Defining Results:</i> "witnessable evidence of growth and learning – allows curriculum and instruction to be delivered in a timely fashion based on the needs and desires of the individual learner" (KSDE, 2010, p. 46)</p> <ul style="list-style-type: none"> • Academic / Cognitive • Technical / Career-specific • Employability • Post-secondary evidence



District Leadership Goals/Plans

- Layer of accountability at district level
- Actively involves district leadership and BOE in the process




Public Transparency

Where

- School Home Page
- District Home Page
- KSDE Dashboard


How

- All accreditation work is accomplished through KSDE Accreditation System – step-by-step, screen-by-screen guidance through entire process.

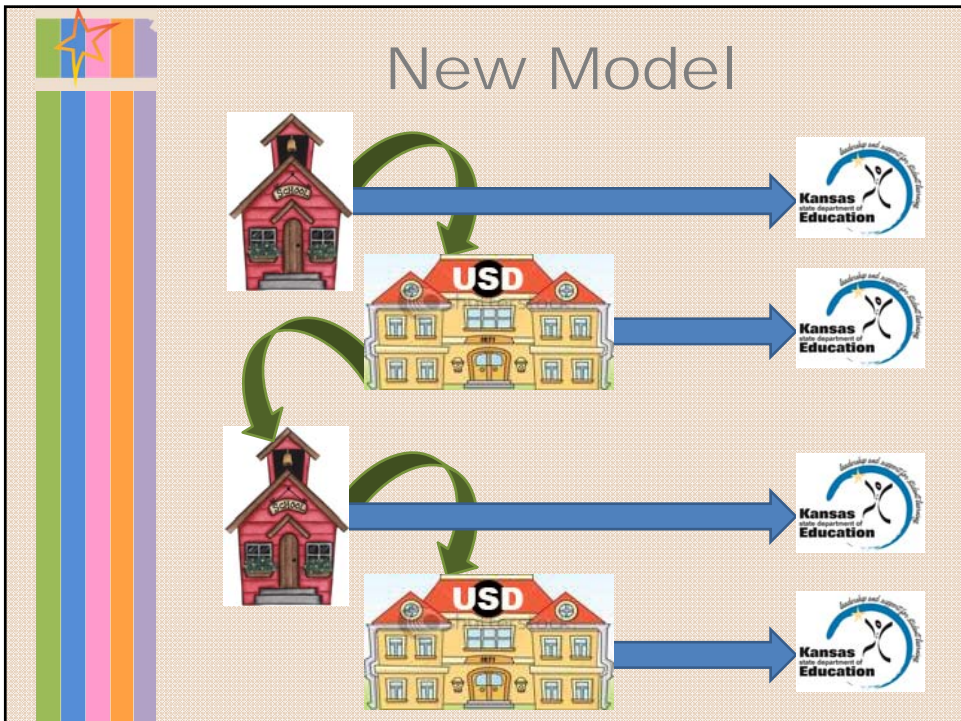
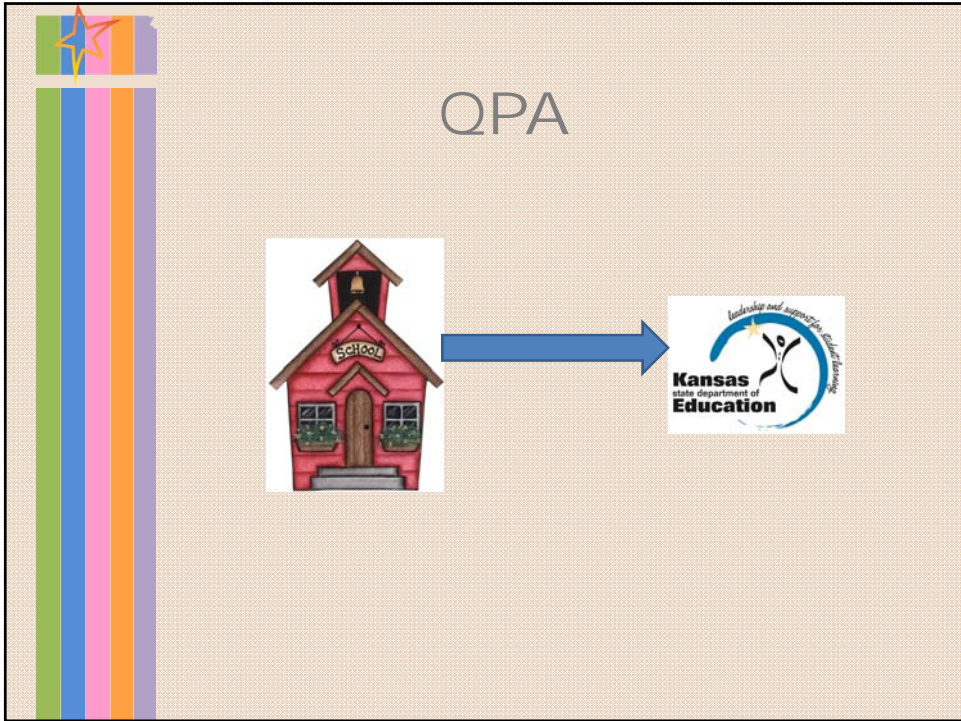



QPA Performance Criteria
and New Model

- ✓ **Student achievement**
RESULTS – ACADEMIC / COGNITIVE
- ✓ **Assessment participation**
RESULTS – ACADEMIC / COGNITIVE
RELEVANCE – STUDENT ENGAGEMENT
- ✓ **Attendance rates**
RESULTS – EMPLOYABILITY
RELATIONSHIPS – STUDENTS
RELEVANCE – STUDENT ENGAGEMENT
- ✓ **Graduation rates**
RESULTS – EMPLOYABILITY



Accreditation Process






Process

Year One


1. Assemble and train all teams/committees.
2. Buildings conduct **NEEDS ASSESSMENT**. Building Site Council acknowledges, Superintendent approves.
3. District conducts **NEEDS ASSESSMENT** and selects 1-2 Rs as **GOAL AREAS**. District Site Council gives feedback.
4. District conducts virtual meeting with OVT.
5. BOE acknowledges needs assessments, approves goal areas.



Process

Year Two


1. Buildings develop 2-3 **BUILDING GOALS** related to the district-wide goal areas.
2. Buildings develop a **BUILDING ACTION PLAN** for each goal developed in Step 1.
3. Building Site Councils give feedback on goals and plans. Superintendent approves goals and plans.
4. District develops 2-3 **DISTRICT LEADERSHIP GOALS** related to the district-wide goal areas.
5. District develops **DISTRICT LEADERSHIP ACTION PLAN** for each district leadership goal. District Site Council acknowledges, BoE approves.
6. District and Buildings can initiate **PROFESSIONAL LEARNING** to prepare staff for implementation.



Process

Year Three


1. District and Buildings implement action plans, gathering **EVIDENCE AND ARTIFACTS** throughout.
2. Buildings conduct **MID-IMPLEMENTATION REVIEW** at year-end and make adjustments (as indicated) for the following year.
3. District conducts **MID-IMPLEMENTATION REVIEW** at year-end and makes adjustments (as indicated) for following year.
4. District Site Council and Outside Validation Team give feedback on adjustments.
5. BOE approves any adjustments.



Process

Year Four


1. Buildings continue implementation of building action plans, gathering **EVIDENCE AND ARTIFACTS** throughout.
2. Buildings update Building Site Councils and Superintendent by Dec. 1 and April 1.
3. District continues implementation of district leadership action plans, gathering **EVIDENCE AND ARTIFACTS** throughout.
4. District updates District Site Council, OVT, and BOE by Dec. 15 and March 15.
5. Buildings begin gathering data, as applicable, for upcoming post-implementation analysis.



Process

Year Five

1. Buildings and District conduct **POST IMPLEMENTATION ANALYSIS** (similar process to needs assessment).
2. District conducts **OVT ON-SITE VISIT**.
3. District submits **APPLICATION FOR DISTRICT ACCREDITATION RATING** by March 1.
4. State Board acts on applications in April.
5. **NEW DISTRICT ACCREDITATION RATING** is effective July 1 and remains in effect for five years or until State Board acts to change it.



Accreditation Status

(Advisory Council will finalize a recommendation at Feb. 9 meeting.)

Accredited

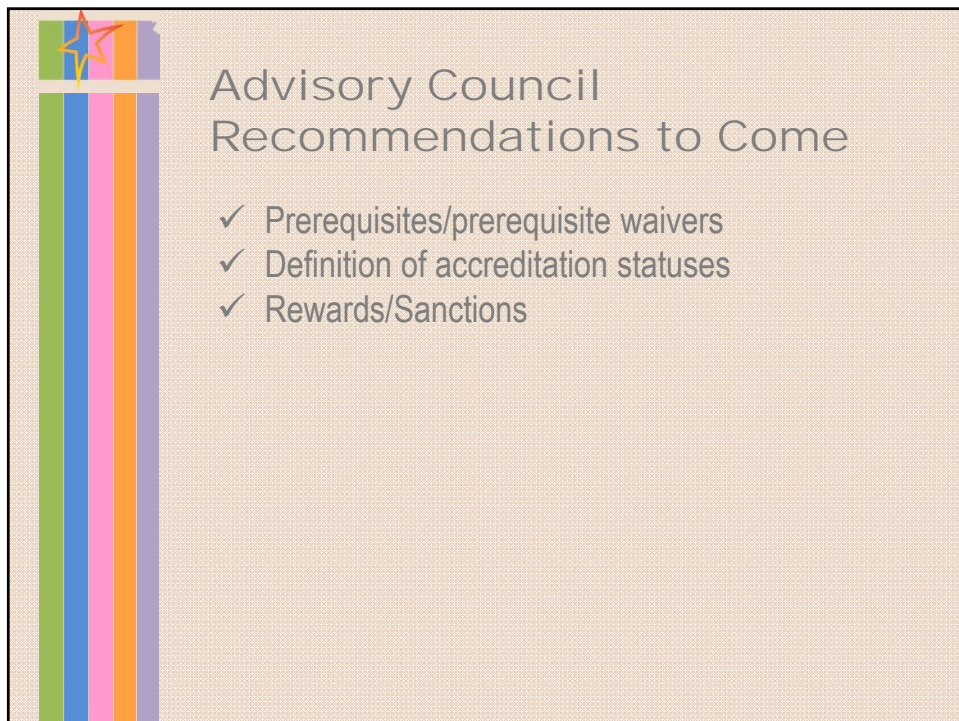
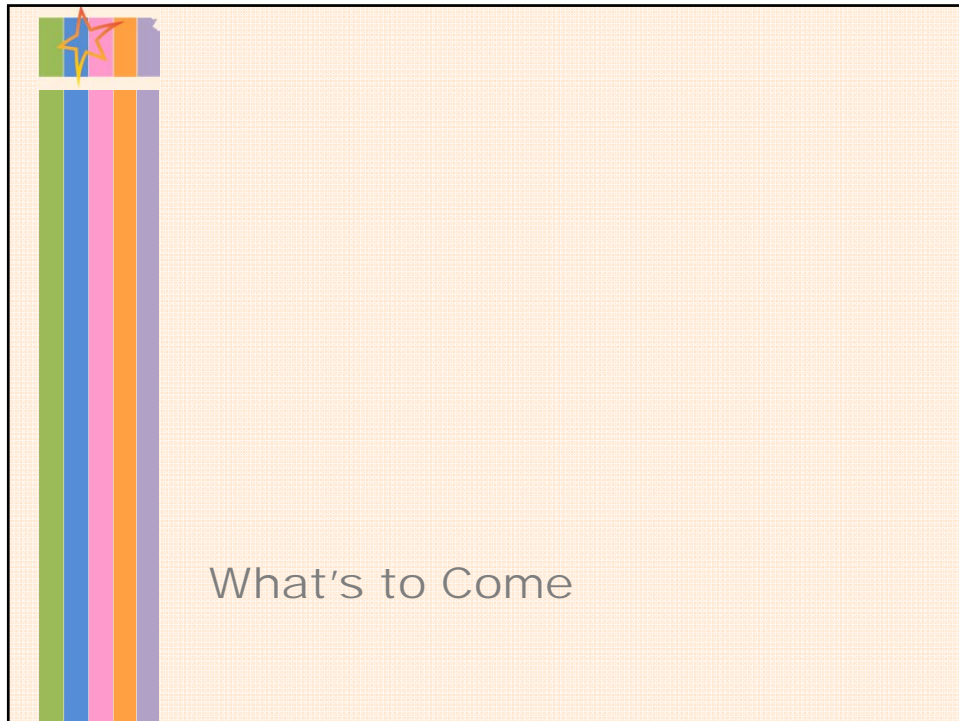
- USDs and non-public schools completing all requirements and demonstrating continual overall growth


Conditionally Accredited

- USDs with more than ___% of its schools involved in mandated improvement programs or showing little/no continual overall improvement
- New non-public schools seeking initial accreditation

Not Accredited


- USDs and non-public school participants not completing requirements and/or not demonstrating overall growth






KSDE Work to Do

- ✓ Revise regulations
- ✓ Accreditation software (authenticated application)
- ✓ Accreditation instructions/guidance for field
- ✓ Professional learning for field
- ✓ Training for Outside Validation Team members
- ✓ Details of implementation




Regulations Revision

CURRENT QPA REG	CONTENT	CHANGE NEEDED
91-31-31	Definitions	Revision of terms
91-31-32	Performance & Quality Criteria	Rename/Replace w/ KESA model
91-31-33	Data Submission	None
91-31-34	Local Board of Education Requirements	None
91-31-35	Graduation Requirements	None
91-31-36	Technical Assistance Teams	Rename & revise to fit KESA
91-31-37	Accreditation Recommendation & Appeal	None
91-31-38	Accreditation Status	Revision
91-31-39	Rewards	TBD – possible revision
91-31-40	Sanctions	TBD – possible revision
91-31-41	Public Disclosure	Slight revision
91-31-42	Waiver	None



Approval Timeline

Fall 2014/Winter 2015	submit revisions for legal review
Fall 2015	State Board 'Receive Item'
Fall/Winter 2015	State Board 'Action Item'
Winter '15 – Summer '16	Prepare field for implementation
July 2016	First cycle begins for all districts
May 2018	Group 1 districts receive official ratings
May 2019	Group 2 districts receive official ratings



Implementation

	2016-17	2017-18	2018-19	2019-20	2020-21	2021-22	2022-2023
1	(RATING YR)	Year 1	Year 2	Year 3	Year 4	Year 5 (RATING YR)	
2	2-year cycle	(RATING YR)	Year 1	Year 2	Year 3	Year 4	Year 5 (RATING YR)
3	3-year cycle		(RATING YR)	Year 1	Year 2	Year 3	Year 4
4	4-year cycle			(RATING YR)	Year 1	Year 2	Year 3
5	5-year cycle				Year 5 (RATING YR)	Year 1	Year 2



Teacher Licensure and Accreditation (TLA)
Landon State Office Building, Room 107

Dr. Scott Myers, Director
smyers@ksde.org
785.296.8010

Bill Bagshaw, Assistant Director
785.296.2198
bbagshaw@ksde.org

Kelly Slaton, Education Program Consultant
785.368.7356
kslaton@ksde.org