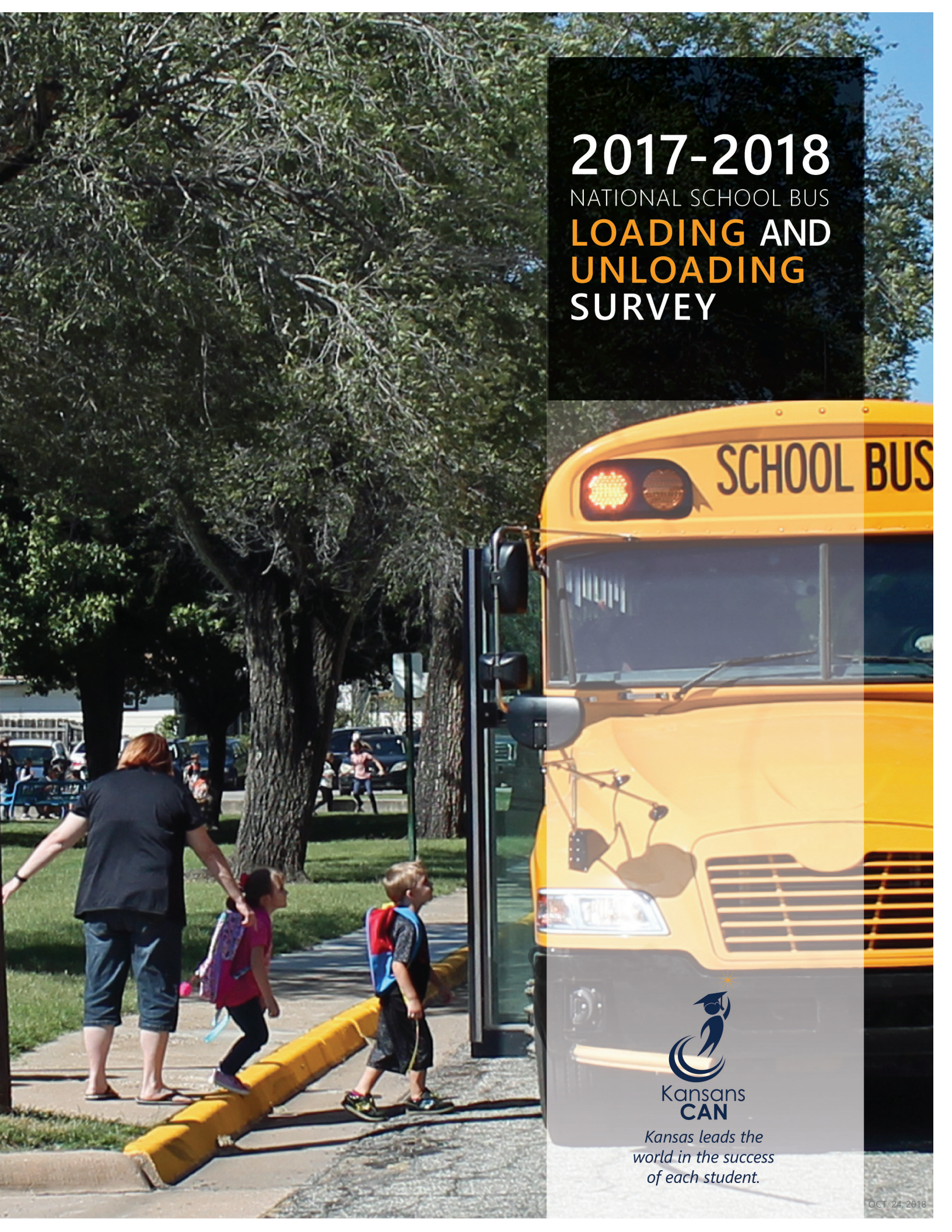


2017-2018

NATIONAL SCHOOL BUS
**LOADING AND
UNLOADING**
SURVEY



Kansas
CAN

*Kansas leads the
world in the success
of each student.*

The Kansas State Department of Education School Bus Safety Unit wishes to thank the National Association of State Directors of Pupil Transportation Services for their assistance with this report.



The National School Bus Loading and Unloading Survey is a collection of fatality accident reports provided by state agencies that are responsible for school transportation and/or accident records.* The Kansas State Department of Education (KSDE), along with the help of the National Association of State Directors of Pupil Transportation Services, asks that all states and Washington, D.C., provide data to the agency, and then KSDE compiles it for this survey. Only fatalities involving school children in or around the loading or unloading areas of a school bus are included.

This survey is provided annually to the school transportation industry in an effort to raise awareness of the dangers involved in loading and unloading school children. Fatalities — which are caused by a variety of circumstances and errors by passing motorists and school bus drivers — continue to take place. This shows the continuing need for forceful, advanced instruction to school bus drivers and students, as well as the need to increase our efforts to thoroughly inform drivers across the country about the requirements of the school bus stop law.

The 2017-2018 National School Bus Loading and Unloading Survey is only available online. Please reproduce and utilize the survey data as desired.

** Numbers are only as accurate as the reporting agency that provides them.*

For more information contact:

Keith Dreiling
Director of School Bus Safety
(785) 296-4567
kdreiling@ksde.org



School Bus Safety Unit
Kansas State Department of Education
Landon State Office Building
900 S.W. Jackson Street, Suite 356
Topeka, Kansas 66612-1212
(785) 296-3551
www.ksde.org

CONTENTS

2017-2018 REPORTS OF FATALITIES BY STATE.....	1
Number of States Reporting Fatalities.....	1
10-Year Survey of Total Fatalities.....	1
VEHICLE.....	2
School Buses vs. Other Vehicles.....	2
School Bus Type.....	2
School Children Killed by Vehicle Passing School Bus.....	2
Position of Child When Killed by School Bus.....	2
Objects Caught or Dropped.....	2
DESTINATION.....	3
LOCATION OF FATALITY.....	3
AGE.....	4
GENDER.....	4
DAY OF THE WEEK FATALITY OCCURRED.....	5
MONTH FATALITY OCCURRED.....	5
LIGHTING CONDITIONS.....	6
WEATHER CONDITIONS.....	6
WEATHER-RELATED ROAD CONDITIONS.....	6
AREA WHERE FATALITY OCCURRED.....	7
ROAD TYPE.....	7
48-YEAR SUMMARY.....	8
Age.....	8
School Buses vs. Other Vehicles.....	9
Destination.....	9



REPORTS OF FATALITIES BY STATE

NEBRASKA

An 8-year-old boy had unloaded from the school bus. The bus driver did not see him as he crossed in front of the bus. The bus moved forward, and the student was struck and killed by the right front wheel of the bus.

MISSOURI

A 10-year-old boy was running to catch the school bus. The student tripped and fell and was struck and killed by the right rear dual wheels of the bus.

NEW YORK

A 6-year-old girl had unloaded from the school bus. The bus driver did not see her as she crossed in front of the bus. The bus moved forward, and the student was struck and killed by the right rear dual wheels of the bus.

NORTH CAROLINA

A 15-year-old girl was running to catch the school bus at a T-intersection. The school bus was stopped with its stop arm and eight-way lights activated on the nonthrough street of the T-intersection. The student was crossing the through street when she was struck and killed by a vehicle.

GEORGIA

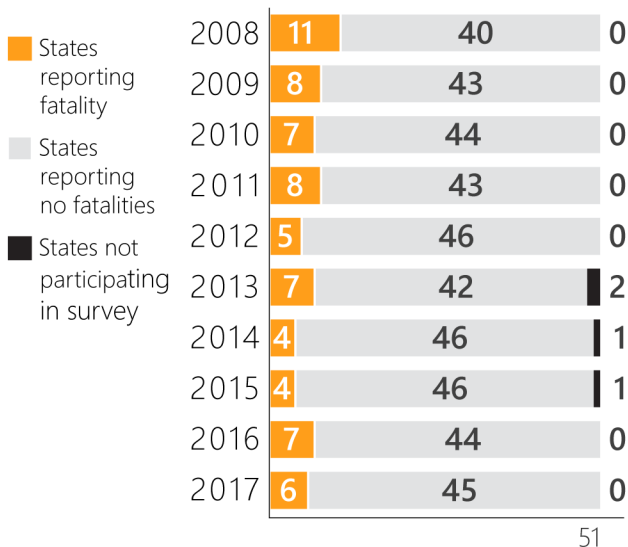
An 8-year-old girl was crossing the street with her mother to load onto the school bus. The stop arm and eight-way red lights were activated. An oncoming vehicle did not stop and mother and daughter were both struck. The mother survived, but the girl did not.

ARIZONA

A 15-year-old girl had unloaded from the school bus and was crossing the roadway. The stop arm and eight-way red lights were activated. An alleged drunk driver did not stop, and the student was struck and killed.

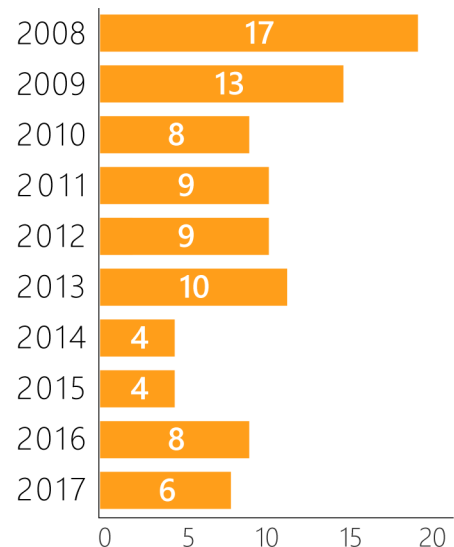
States Reporting Fatalities

50 States and Washington D.C.

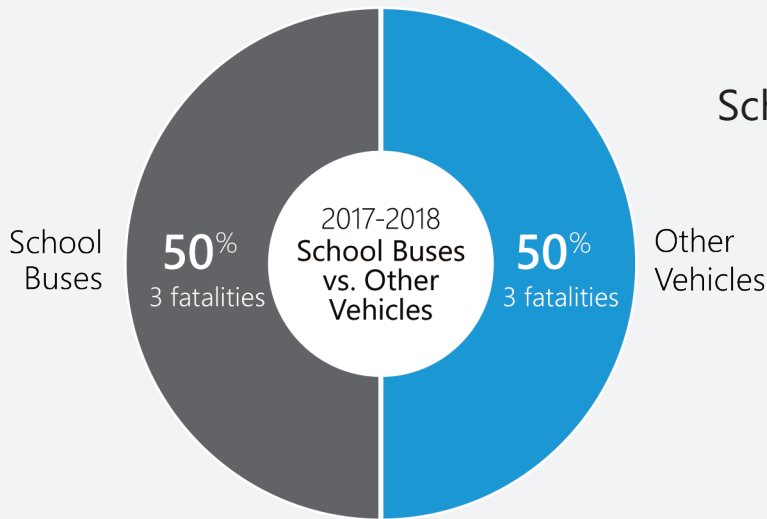


10-Year Survey of Fatalities

50 States and Washington D.C.



VEHICLE



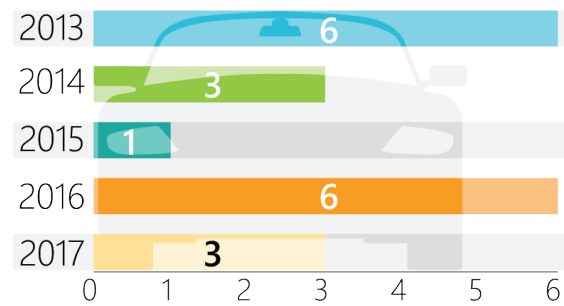
School Buses vs. Other Vehicles

Fifty percent of fatalities were attributed to school buses during the 2017-2018 school year. Fifty percent were attributed to other vehicles during the same time period.

School Bus Type

	Type A	Type C	Type D	Total
2013		3	1	4
2014	1			1
2015		3		3
2016		2		2
2017		2	1	3

School Children Killed by Vehicle Passing School Bus



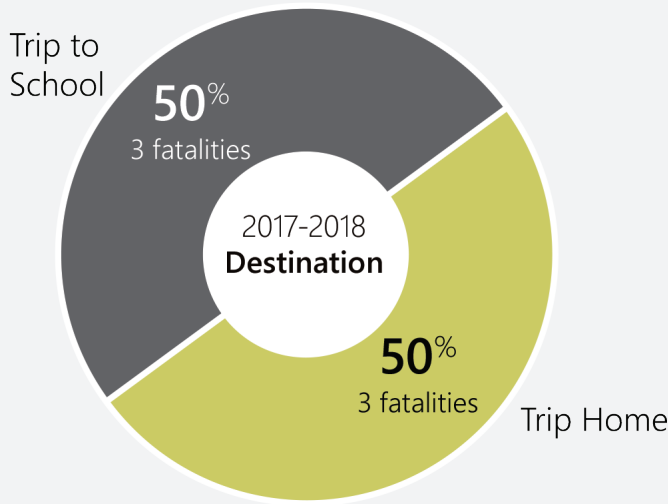
Position of Child When Killed by School Bus

	Back	Front	Total
2013	1	3	4
2014	1		1
2015	1	2	3
2016	1	1	2
2017	2	1	3

Objects Caught or Dropped

	Closed Door	Dropped Object	Total
2013			0
2014			0
2015		2	2
2016	1		1
2017			0

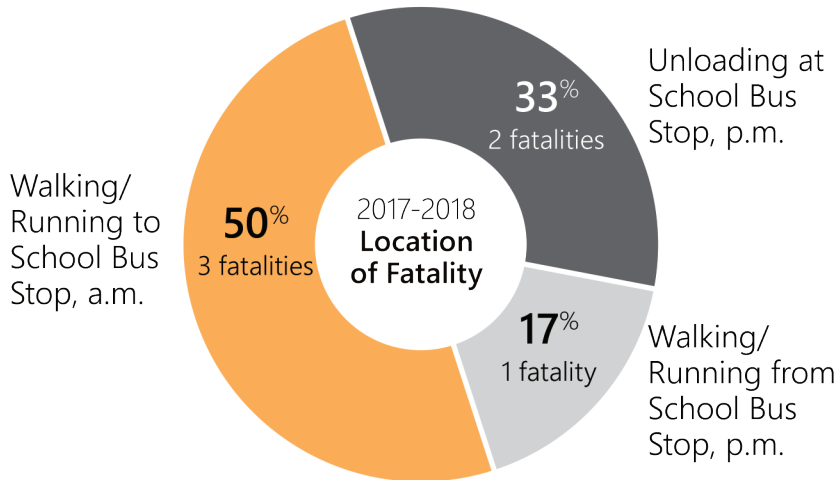
DESTINATION



In 2017-2018, students departing the school bus on their way home attributed to 50 percent of fatalities.

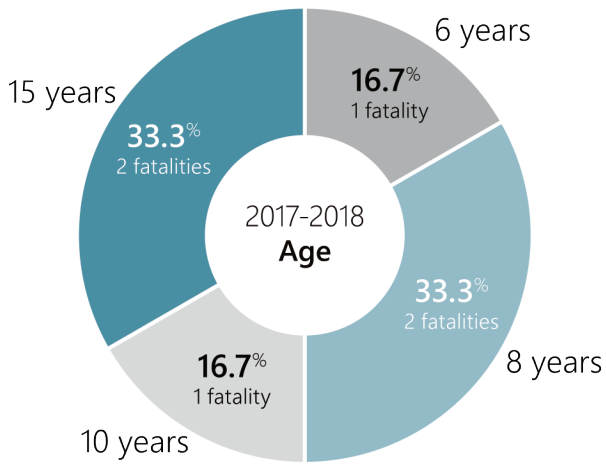
	Trip to School	Trip Home	Total
2013	7	3	10
2014	1	3	4
2015	2	2	4
2016	4	4	8
2017	3	3	6

LOCATION OF FATALITY



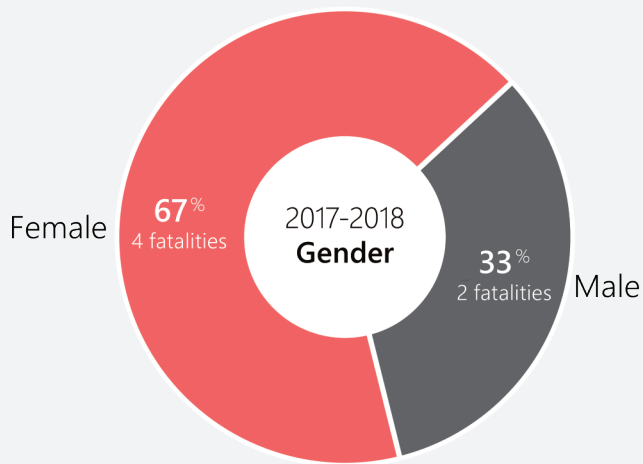
	School Bus Stop				School Grounds	Total
	Walking/Running to a.m.	Waiting at a.m.	Unloading at p.m.	Walking/Running from p.m.	Unloading at a.m.	
2013	5	1	3		1	10
2014		1	2	1		4
2015		2	2			4
2016	4		2	2		8
2017	3		2	1		6

AGE



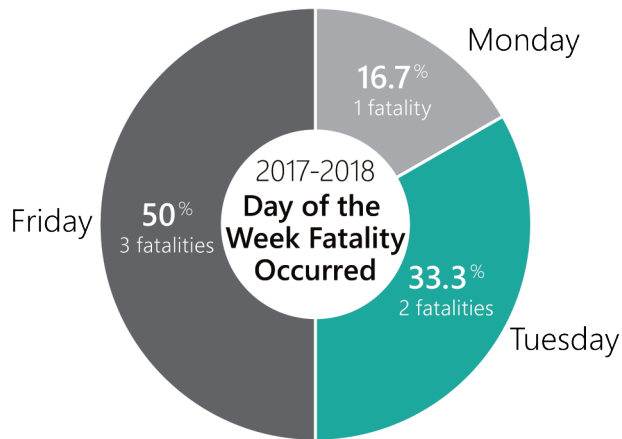
Age	2013	2014	2015	2016	2017
1					
2			1		
3					
4					
5			2		
6	5			2	1
7		1		3	
8	1				2
9	1			1	
10		1			1
11				1	
12		1			
13					
14	1				
15					2
16		1	1	1	
17	2				
Total	10	4	4	8	6

GENDER



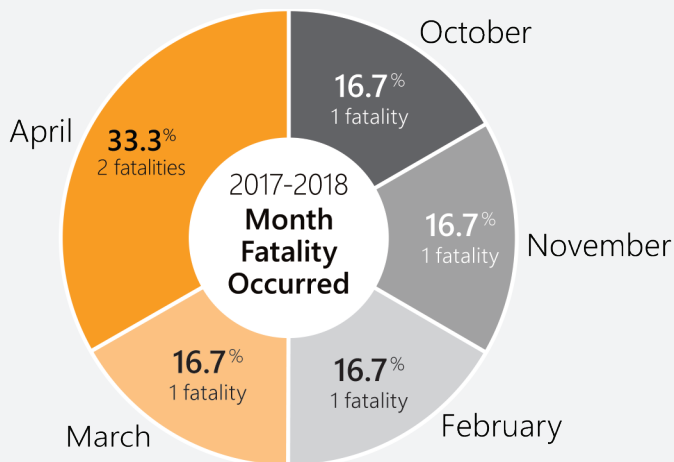
	Male	Female	Total
2013	7	3	10
2014	2	2	4
2015	4	0	4
2016	4	4	8
2017	2	4	6

DAY OF THE WEEK FATALITY OCCURRED



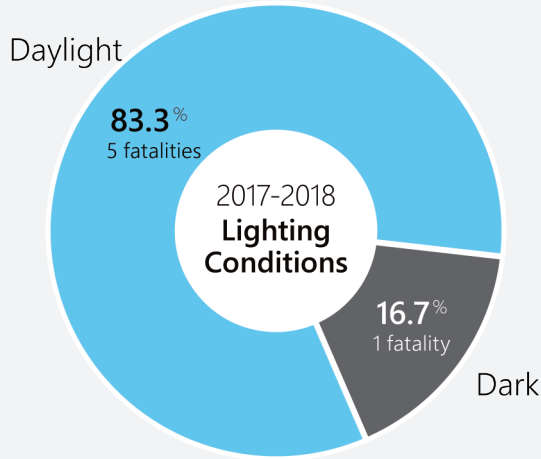
	Monday	Tuesday	Wednesday	Thursday	Friday	Total
2013	4	2	1	1	2	10
2014	2			2		4
2015	2		1		1	4
2016	1	1		4	2	8
2017	1	2			3	6

MONTH FATALITY OCCURRED



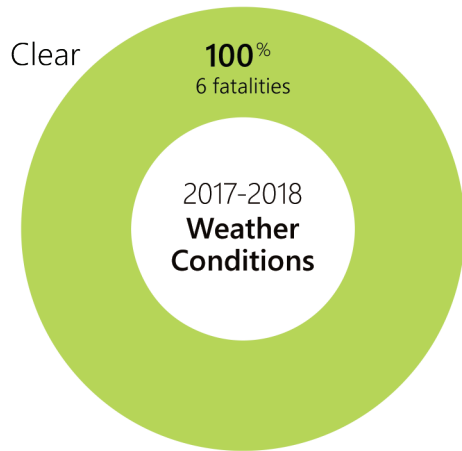
	Jan.	Feb.	Mar.	Apr.	May	Jun.	Jul.	Aug.	Sept.	Oct.	Nov.	Dec.	Total
2013	1	3		3	1					1		1	10
2014			2							1		1	4
2015				1		1			1	1			4
2016		1	3							3	1		8
2017		1	1	2						1	1		6

LIGHTING CONDITIONS



	Dawn	Daylight	Dark	Total
2013	2	5	3	10
2014	1	3		4
2015	1	2	1	4
2016		7	1	8
2017		5	1	6

WEATHER CONDITIONS



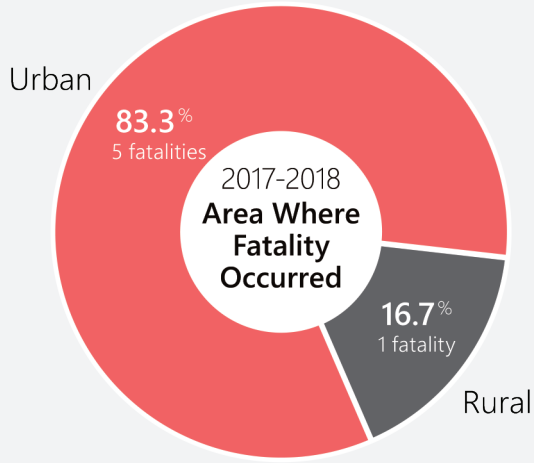
	Clear	Cloudy	Cloudy/Raining	Rain	Fog	Total
2013	6	1	1	1	1	10
2014	4					4
2015	3				1	4
2016	7	1				8
2017	6					6

WEATHER-RELATED ROAD CONDITIONS



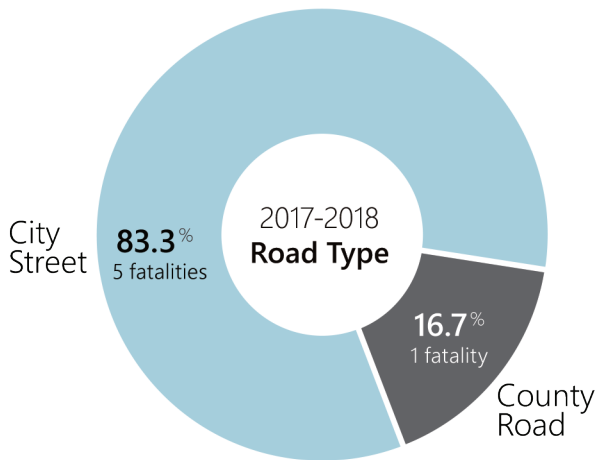
	Dry	Wet	Snow/Slush	Total
2013	7	3		10
2014	4			4
2015	3	1		4
2016	7		1	8
2017	6			6

AREA WHERE FATALITY OCCURRED



	Rural	Urban	Total
2013	2	8	10
2014	3	1	4
2015	3	1	4
2016	7	1	8
2017	1	5	6

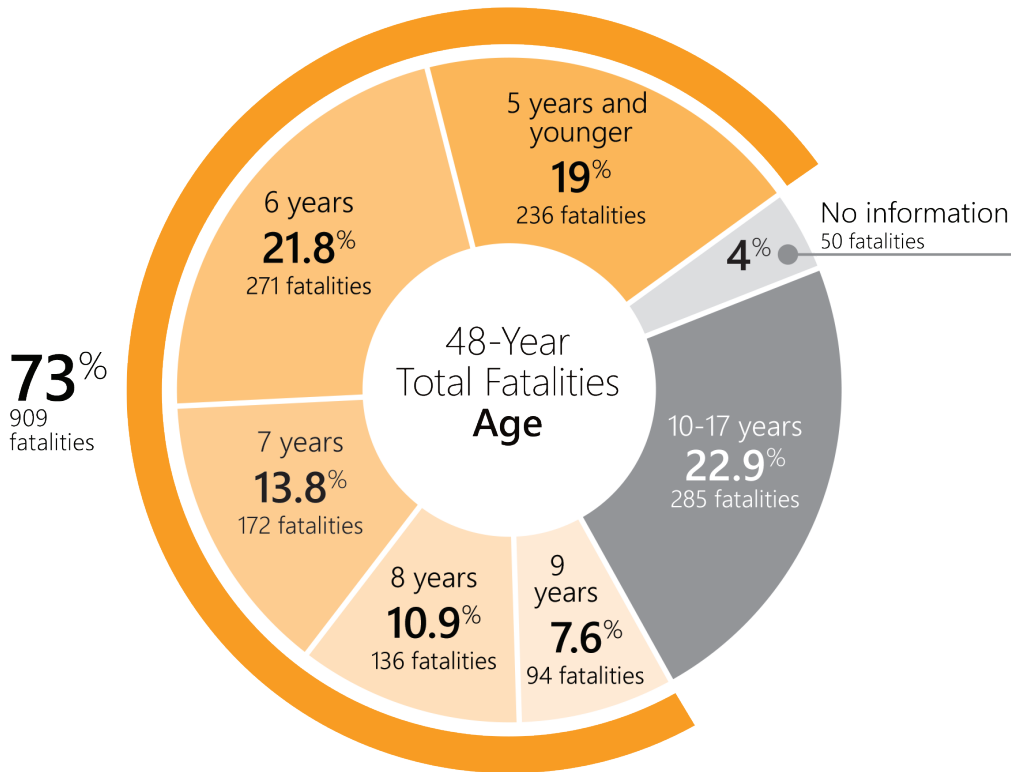
ROAD TYPE



	City Street	State Highway	Federal Highway	County Road	Private Property	Total
2013	4	2		2	2	10
2014	1	3				4
2015	2	1		1		4
2016	2	5	1			8
2017	5			1		6

48-YEAR SUMMARY

AGE

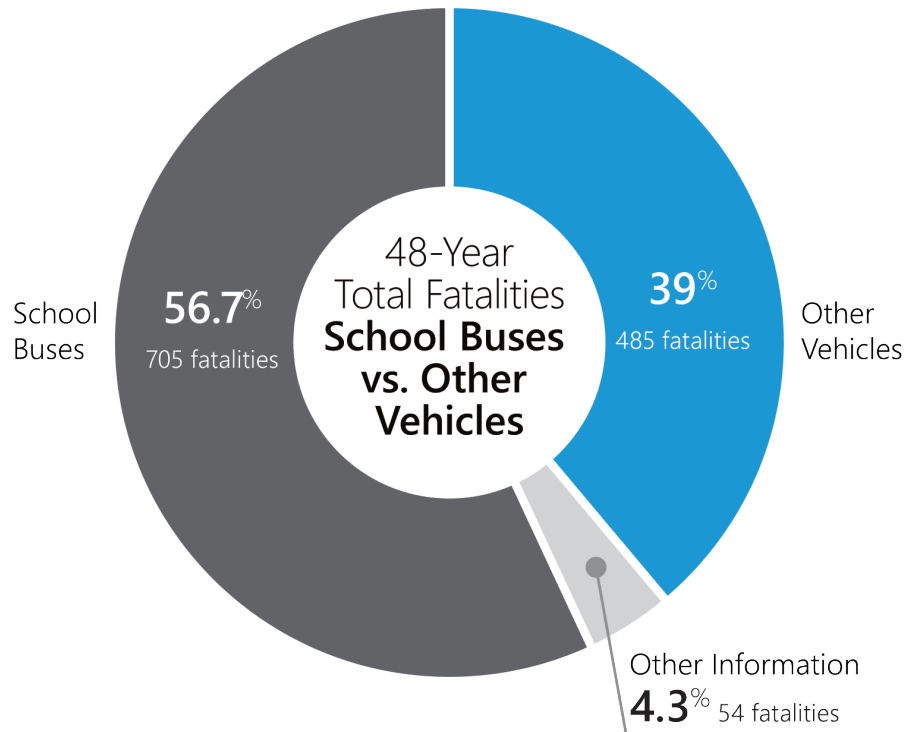


During the past 48 years, the largest percentage of fatalities, 73 percent (909 fatalities), occurred to students 9 years of age and under.

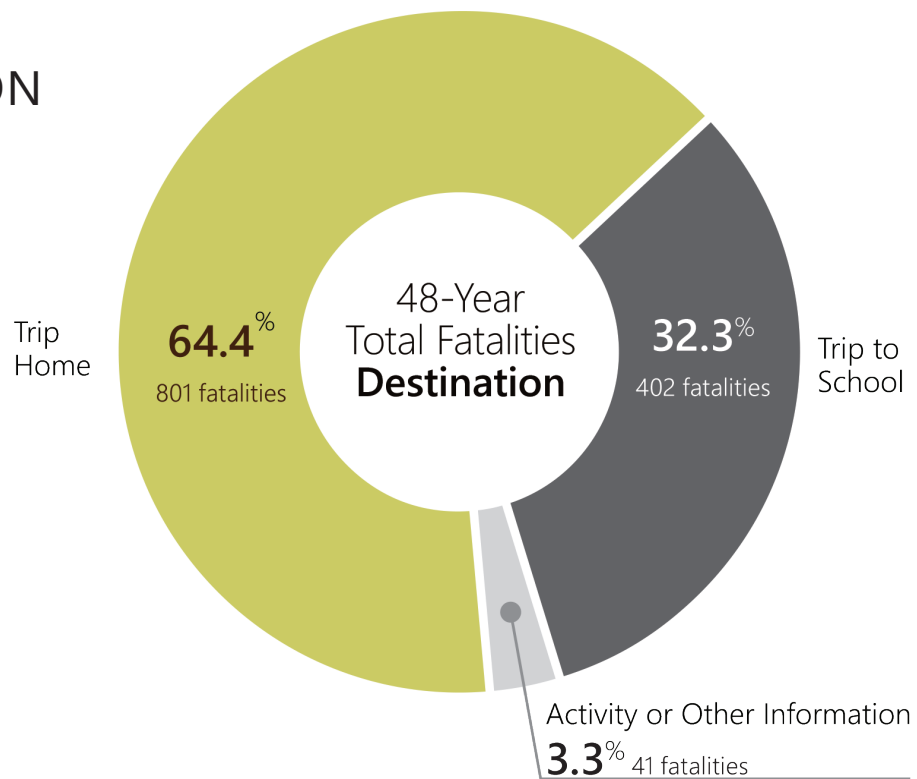


48-Year Total Student Fatalities: 1,244

SCHOOL BUSES VS. OTHER VEHICLES



DESTINATION





DISTRICT 1
Janet Waugh



DISTRICT 2
Steve Roberts



DISTRICT 3
John W. Bacon



DISTRICT 4
Ann E. Mah



DISTRICT 5
Sally Cauble



DISTRICT 6
Deena Horst



DISTRICT 7
Kenneth Willard



DISTRICT 8
Kathy Busch, Vice chair



DISTRICT 9
Jim Porter, Chairman



DISTRICT 10
Jim McNiece

Mission

To prepare Kansas students for lifelong success through rigorous, quality academic instruction, career training and character development according to each student's gifts and talents.

Vision

Kansas leads the world in the success of each student.

Motto

Kansans CAN.

Successful Kansas High School Graduate

A successful Kansas high school graduate has the

- Academic preparation,
- Cognitive preparation,
- Technical skills,
- Employability skills and
- Civic engagement

to be successful in postsecondary education, in the attainment of an industry recognized certification or in the workforce, without the need for remediation.

Outcomes for Measuring Progress

- Social-Emotional growth measured locally
- Kindergarten readiness
- Individual Plan of Study focused on career interest
- High school graduation
- Postsecondary success



Kansas State Department of Education
Landon State Office Building
900 S.W. Jackson Street, Suite 600
Topeka, Kansas 66612-1212
(785) 296-3201
www.ksde.org



Dr. Randy Watson
Kansas Commissioner of Education



Dale M. Dennis
Deputy Commissioner
Division of Fiscal and Administrative Services



Brad Neuenswander
Deputy Commissioner
Division of Learning Services

