

Welcome to the Special Education Administrators' Webinar

- This meeting will get started promptly at 9am.
- If you require sign language interpreting services today, please locate our interpreters in the participants list and pin their video to your screen. Our Interpreters today are Peige and April.
- If you have any questions about today's content, please feel free to use the chat option so we can capture the questions.



November 12th, 2021

KSDE SETS Special Education Administrators' Webinar Agenda

Agenda Item	Presenter
Director Updates	Bert Moore
SPEDPro Data Reporting Reminders: December 1 Preparation	Mason Vosburgh
Early Childhood Updates	Amanda Petersen
TASN – Educate Kansas, formerly known as KEEB	Nikki Heiman
TASN – Kansas MTSS and Alignment	Linda Wilkerson
Alternative Placement Monitoring	Stacie Martin
TASN – e-Mentoring for Student Success (eMSS)	Julie Jameson
TASN – Technical Assistance Team	Doug Tressler
KSDE Listserv Reminders	Evelyn Alden
Categorical Aid	Evelyn Alden
KIAS Calendar Reminders	Crystal Davis
KASEA Updates	Jaime Callaghan





SETS STATE DIRECTOR UPDATES

November 12, 2021

HOT TOPICS

- [https://www.ksde.org/Portals/0/SES/transition/SecondaryTransition in the IEP What Parents and Students Need to Know.pdf](https://www.ksde.org/Portals/0/SES/transition/SecondaryTransition%20in%20the%20IEP%20What%20Parents%20and%20Students%20Need%20to%20Know.pdf)
- Special Education Administrators Guide
<https://www.ksdetasn.org/tasn/kansas-special-education-administrators-guide-and-resources>
- PRE-ETS – email sent earlier this week on pre-employment transition services available to students beginning at age 14
- SETS Quarterly – January 25, 2022
- Level of Determination – Public Comment
- Significant Disproportionality – Move to December 10



Differentiated Monitoring - OSEP

- Fiscal Monitoring
- Integrated Monitoring - General Supervision
- Sustaining Compliance and Improvement
- Dispute Resolution/Mediation/State Complaint/Due Process
- Technical Assistance and Professional Development
- Data
- State Performance Plan/Annual Performance Report
- Implementation of Policies and Procedures



OSEP LETTER 11-10-21

- “The purpose of this communication is to reinforce the Department’s priority to monitor States as they meet their general supervision obligations under Part B of the IDEA so that eligible children with disabilities receive a FAPE in the LRE in the current school year. The Department expects States to ensure that LEAs are complying with IDEA’s requirements, including child find, evaluation and reevaluations, and appropriate IEPs. It is equally important that States and LEAs properly address equitable treatment of all eligible students with disabilities, with a particular focus on those from low-income backgrounds, who are racial or ethnic minorities, who are English learners, and/or who are experiencing homelessness, all of whom were greatly impacted by the pandemic.”



Keep The Main Thing The Main Thing



11/15/2021





Bert Moore
SETS Director
(785) 296-4949
bmoore@ksde.org

The Kansas State Department of Education does not discriminate on the basis of race, color, national origin, sex, disability or age in its programs and activities and provides equal access to the Boy Scouts and other designated youth groups. The following person has been designated to handle inquiries regarding the nondiscrimination policies: KSDE General Counsel, Office of General Counsel, KSDE, Landon State Office Building, 900 S.W. Jackson, Suite 102, Topeka, KS 66612, (785) 296-3201.



Early Childhood Updates

November 12, 2021 Special Education
Administrators' Webinar



The vision: Kansas leads the world in the success of each student.



KSDE Early Childhood Team Members

Jordan Christian jchristian@ksde.org	State Interagency Coordinating Council (SICC), Local Interagency Coordinating Councils (LICCs), IDEA Part C, Kansas Kindergarten Readiness Snapshot (ASQ)
Natalie McClane nmcclane@ksde.org	Quality Preschool Programming, State Preschool Programs (Preschool-Aged At-Risk and Kansas Preschool Pilot), Transitions to Kindergarten
Amanda Petersen apetersen@ksde.org	KSDE Early Childhood Director, <i>All in for Kansas Kids</i> Strategic Plan for Early Childhood, Kansas Preschool Budgeting Resources
Julie Rand jrand@ksde.org	Early Childhood Special Education, Section 619 Coordinator
Beccy Strohm bstrohm@ksde.org	KSDE Early Childhood Administrative Specialist, Early Learning Listserv, Outcomes Part B Web System (OWS) Application Administration
Nis Wilbur nwilbur@ksde.org	Kansas Parents as Teachers (KPAT), Home Visiting, Family Engagement and Partnership



Stay Connected

- Join the Early Learning listserv (Email bstrohm@ksde.org)
- Visit the KSDE Early Childhood webpage: www.ksde.org, Early Childhood
 - Includes 2021-2022 Events Calendar for Early Childhood Programs and monthly Early Childhood Program Updates



Today's early childhood updates:

- *Kindergarten in Kansas* booklets available for distribution
- Applications for Kansas Preschool Pilot/Early Childhood Block Grant funding are due 5:00 p.m. on Monday, Dec. 20
- Kindergarten Readiness Snapshot (Ages & Stages Questionnaires) and statewide ASQ Online expansion
- *Kansans Can* Star Recognition – Kindergarten Readiness
- Highlighting Kindergarten Readiness this month



Kindergarten in Kansas



Kindergarten in Kansas

The Kansas Parent Information Resource Center and the Kansas State Department of Education partnered to update *Kindergarten in Kansas*, a booklet for families of young children who are getting ready to begin kindergarten.

Free copies of *Kindergarten in Kansas* are available in English, Spanish, Arabic, Burmese, Swahili, and Vietnamese. Organizations serving young children and their families can [click HERE to order free copies of the booklets](#), and you can email Natalie Schweda (nschweda@kpirc.org) with questions.



Kindergarten in Kansas

A BOOKLET FOR FAMILIES OF YOUNG
CHILDREN AGES 3 TO 7 YEARS OLD



Kansas leads the world in the success of each student.

Revised May 2021



Kansas Preschool Pilot



2022-23 Kansas Preschool Pilot grants

Important reminders:

- Preschool is not the **only** possible strategy to support kindergarten readiness.
- The amount of Kansas Preschool Pilot grant funding requested remains much larger than the amount of funding available. There are other larger and more sustainable options for districts to invest in preschool. These include state school finance formula funds, special education funds and federal Head Start grants.
 - Preschool-aged students with disabilities AND 4-year-old students eligible for the Preschool-Aged At-Risk program who are enrolled and attending on Count Day automatically count as a ½ student (0.5 FTE) in calculating a district's enrollment and accompanying weightings.



2022-23 Kansas Preschool Pilot grants

- KSDE and the Kansas Children's Cabinet and Trust Fund have aligned preschool program requirements for the Early Childhood Block Grant and the Kansas Preschool Pilot.
- Applicants will submit a single grant proposal to apply for both grants.
- KSDE and the Children's Cabinet will collaboratively review grant proposals and determine which funding source is best suited to award for each accepted proposal.
- This cross-agency common application process is intended to streamline the grant-writing and reporting process for local grantees.

Timeline: RFP released Nov. 1 and due Monday, December 20 at 5PM



2022-23 Kansas Preschool Pilot grants

Districts applying for grant funds to support preschool will use the Kansas Preschool Revenue Calculator and Budget Template to first demonstrate that they are reinvesting other available sources of funding (*state enrollment aid and accompanying weightings, special education funds, federal Head Start funds*) into their preschool programs **before** requesting grant funding to supplement gaps.

Timeline: RFP released Nov. 1 and due Monday, December 20 at 5PM



2022-23 Kansas Preschool Pilot grants

You can view the Request for Proposals (RFP), application materials, and link to ask questions and request technical assistance on the Children's Cabinet website:

https://kschildrenscabinet.org/ecbg_fy23/.

- Make sure that the Budget Template reads “Updated 11-01-2021 at 3PM” at the top.

Timeline: RFP released Nov. 1 and due Monday, December 20 at 5PM



Kindergarten Readiness Snapshot (Ages & Stages Questionnaires, the ASQ)

Jordan Christian – jchristian@ksde.org



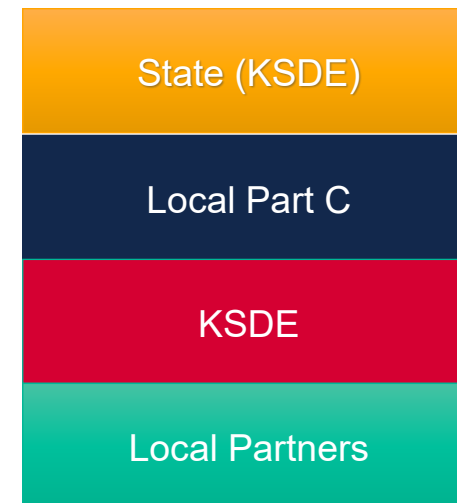
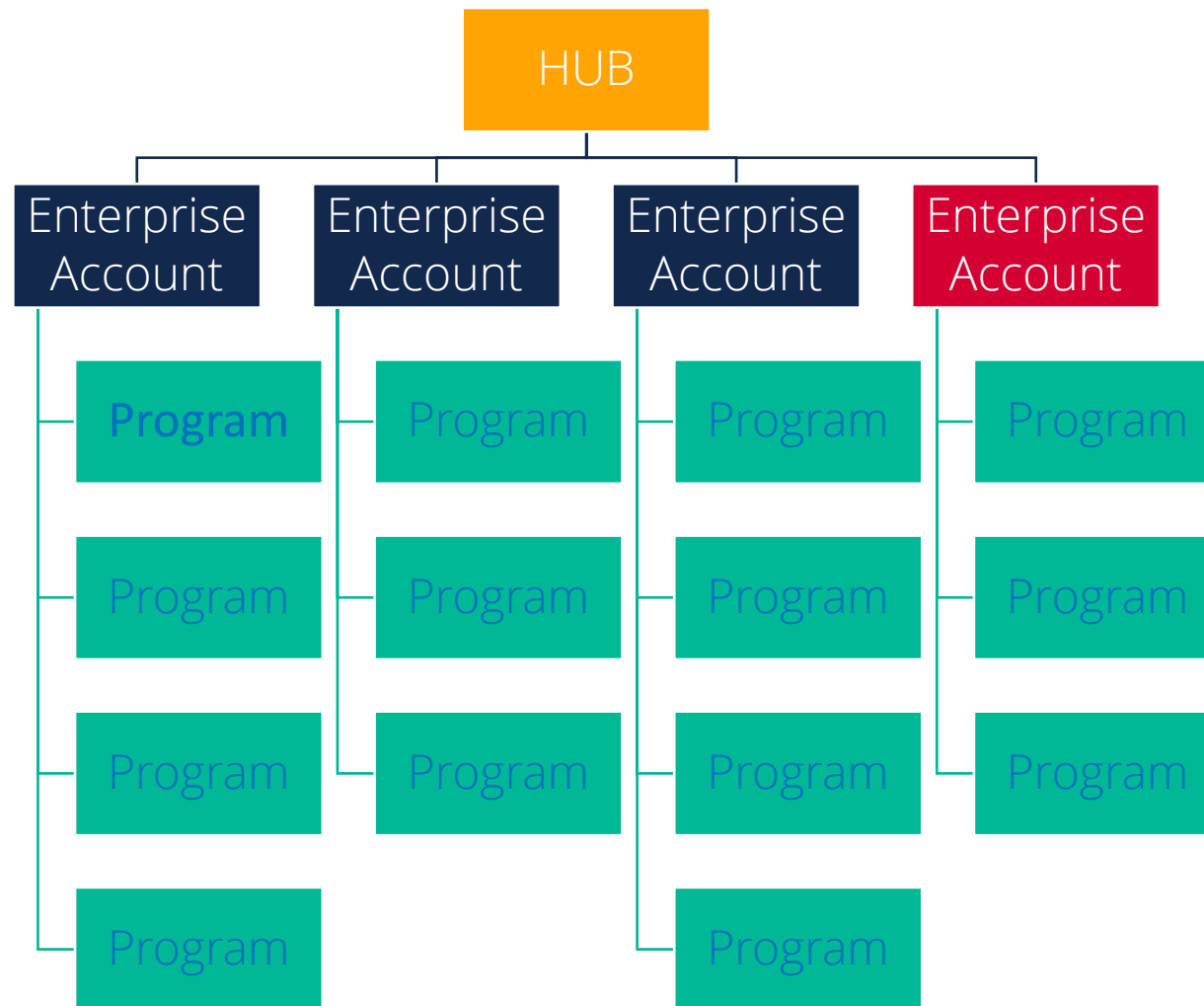
What is the Kansas Kindergarten Readiness Snapshot?

The Ages & Stages Questionnaires® (ASQ) provide a snapshot of children's developmental milestones.

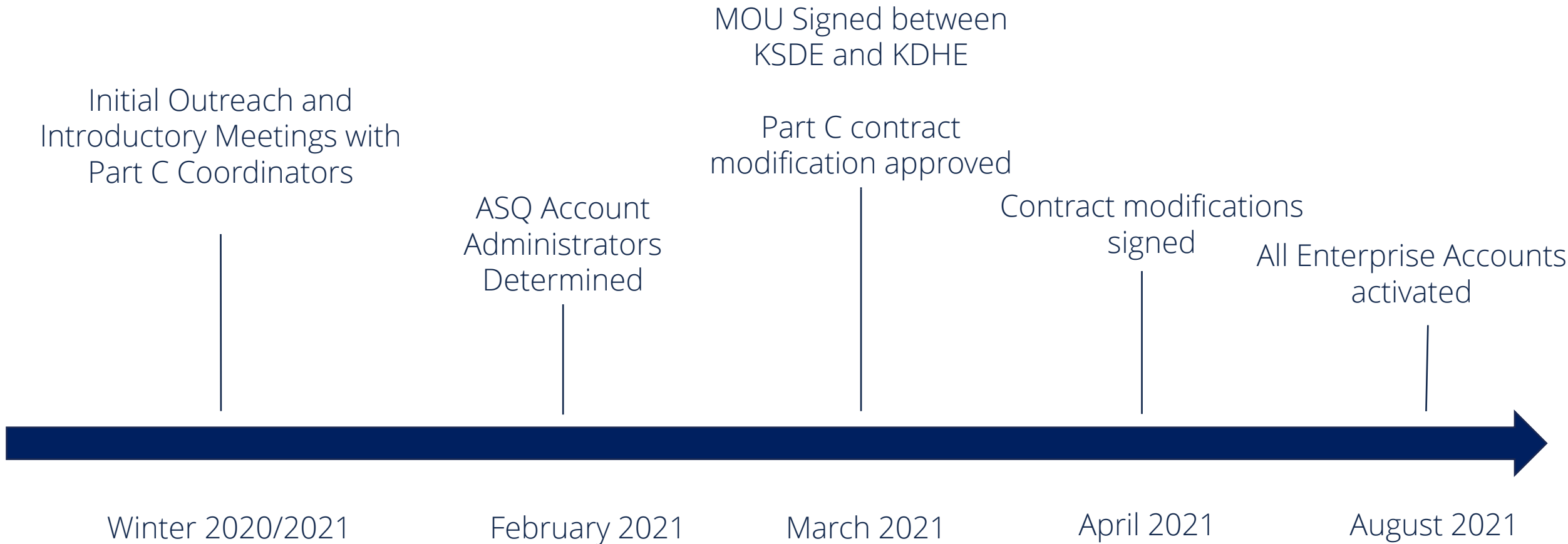
- Ages & Stages Questionnaires®, Third Edition (ASQ-3)
 - Addresses five developmental areas: communication, gross motor, fine motor, problem-solving and personal-social
- Ages & Stages Questionnaires®: Social-Emotional, Second Edition ASQ:SE-2
 - Addresses seven social-emotional areas: self-regulation, compliance, communication, adaptive behaviors, autonomy, affect and interaction with people



KANSAS ENTERPRISE STRUCTURE



IMPLEMENTATION TIMELINE



Current Data

- **66,701** screenings so far in 2021. **55,319** last year
 - 33,723 ASQ-3 Screenings
 - 31,769 ASQ:SE-2
 - 1,209 Pending
- Over **800** programs in the KSDE ASQ Online account are currently screening
- **284** out of **286** districts administered the ASQ this year
- Part C accounts- So far over 50 programs have been created, over 100 users added, roughly 500 child profiles created, and several hundred screenings.



Kindergarten Readiness



Kansans Can Star Recognition

- A short video overview of Kansans Can Star Recognition for Kindergarten Readiness is available on the KSDE YouTube channel.
- Additional information is available on the KSDE Star Recognition webpage.



Kansans Can Star Recognition

On October 12 the Kansas State Board of Education heard a Kansas Can highlight from two school districts recognized in the area of Kindergarten Readiness.

- You can [view the recorded presentation to the State Board on the KSDE YouTube page](#)
- USD 343 Perry-Lecompton shared information about their [early learning services](#) provided to children 18 months through kindergarten entry.
- USD 265 Goddard highlighted how they use co-teaching to deliver inclusive preschool services and their summer camp to support incoming kindergarteners as they transition to kindergarten.



Highlighting Kindergarten Readiness

In November KSDE is highlighting Kindergarten Readiness:

- Insight Podcast episode
- Nov. 3: Kindergarten readiness essential building block for a student's future achievement
 - Available on the KSDE webpage, Facebook, Twitter, and WIBW
- Stay tuned for additional KSDE pieces coming later this month!



Alternative Monitoring Updates



Alternative Monitoring Updates

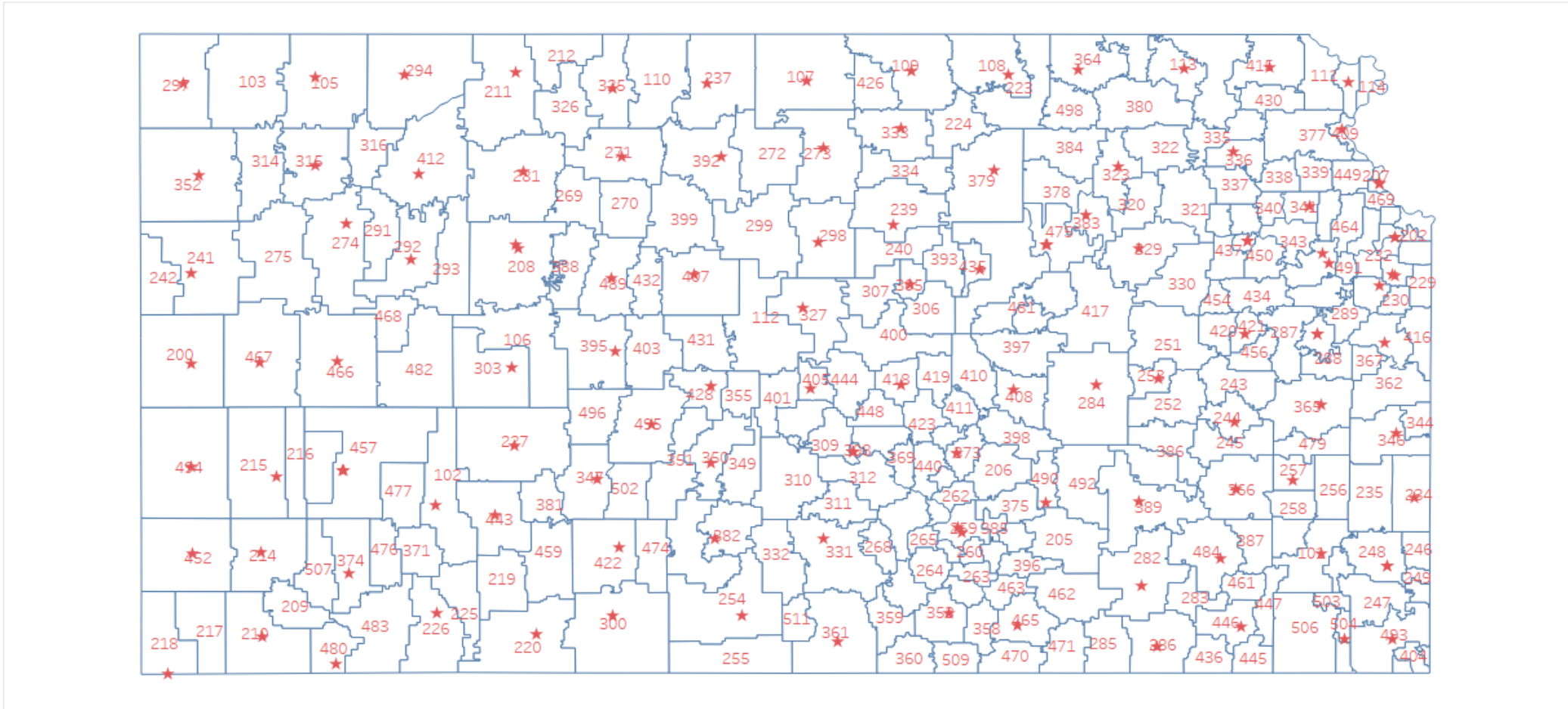
Alternative Monitoring-Adult Jails/Detention Centers

Alternative Integrated Monitoring with Title 1 Part D

Virtual Programs



Kansas Public School Districts: Map of County Jails within USD Boundary



Map based on Longitude (generated) and Latitude (generated). For marks layer USD_2016-05-4_region.shp.Geometry (USD 2016-05-4 r: The marks are labeled by District Number. Details are shown for District Number. For marks layer CntyJailAddress.Zip Code: Details are shown for Zip Code, ID1 and District Number. The data is filtered on Statefp, which keeps 20.



Cohort Monitoring

- Cohort 1:

Garnett, Atchison, Medicine Lodge, Cottonwood Falls, Coldwater, Ellsworth, Garden City, Dodge City, Ottawa, Tribune, Eureka, Jetmore, Holton, Oskaloosa, Leavenworth, Lincoln, Beloit, Erie, Ness City, Lyndon, Mound City, Marysville, McPherson, Wellington, Colby, Washington, Yates Center, Osborne, Phillipsburg, Westmoreland, Pratt, Stockton, Wichita, Topeka.

- Cohort 2:

Wheatland, Graham, Co, Ulysses, Syracuse, Sublette, Gardner Edgerton, Olathe, Lakin, Kingman Norwich, Kiowa, Oswego, Oakley, Meade, Great Bend, El Dorado, Burlington, Abilene, Troy, Kinsley-Offerle, West Elk, Hays, Garden City, Paola, Independence, Nemaha Central, Rawlins Co, Manhattan-Ogden, Russell Co, Scott Co, Liberal, Hoxie, Goodland, Smith Center, St. John-Hudson, Hugoton, Wakeeney, Wabaunsee, Wallace Co.



Cohort Monitoring

Cohort 3:

Iola, Fort Scott, Hiawatha, Chautauqua Co., Columbus, St. Francis, Clay Center, Concordia, Winfield, Girard, Oberlin, Lawrence, Geary Co, Cimarron-Ensign, Chaparral, Newton, Rock Hills, Emporia, Marion Florence, Elkhart, Norton, North Ottawa, Ft. Larned, Hutchinson, Republic, Lyons, Salina, Stanton, Leoti, Fredonia, LaCrosse, Ashland



Alternative Integrated Monitoring

- Cohort 1
- Title I Part D program and IDEA



Virtual Programs

- Career Standards and Assessment Services Team
- Virtual program monitoring



Resources

Presentation KSDE TASN Summer Leadership Conference-
Alternative Placements Adult Jails/Detention Centers

<https://www.ksdetasn.org/tasn/2021-summer-leadership-conference>

Questions

Stacie Martin, smartin@ksde.org



EARLY CAREER MENTORING FOR RETENTION

November 12, 2021



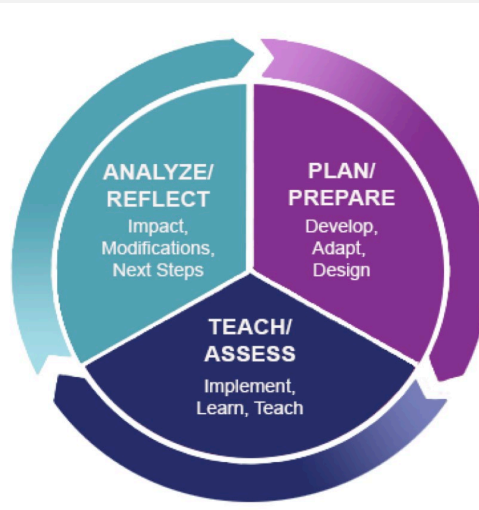
E-MENTORING

- e-Mentoring for Student Success (eMSS) is:
- An innovative, statewide content and exceptionality specific, asynchronous, online mentoring program that accelerates the growth and increases the retention of new teachers.
- An online mentoring program that has been supporting new special education teachers statewide in Kansas since 2012.
- Approved by KSDE Teacher Licensure & Accreditation as a provider of mentoring.

PROGRAM COMPONENTS



Our Place



Explorations



Video Observations

PROGRAM EXPECTATIONS

- Participate in:
 - a goal setting process with your mentor
 - facilitated discussion forums weekly
 - 3 video observation cycles with your mentor (including pre-observation conversation, shared video of practice, and a post observation conversation)
- Complete I exploration
 - Managing Student Behavior
 - Developing IEPs
 - Working with Paraprofessionals
 - Accommodations & Modifications

RESULTS & IMPACT

- Since the 2015-16 school year, 412 early career special educators in 98 districts or related organizations in Kansas have been impacted by Kansas Early Career Special Educator Mentoring.
- 90% of mentees continue teaching 5 years after participating in mentoring.
- 91% of mentees agreed their mentor supported their development as an educator and provided social-emotional support when needed.
- 99% of mentees indicated they applied what they learned in the Exploration to their professional practice.



Listserv message tip



KSDE listservs have an “unsubscribe” link in the footer.

- “To unsubscribe from the SPECIALEDUCATIONDIRECTORS list, click the following link:

<http://listserv.ksde.org/scripts/wa.exe?code in here that is YOUR email=SIGNOFF>

If you forward a listserv email to someone else and do NOT remove that link, and they click that link, YOU will be unsubscribed from the listserv. The someone else will NOT know they unsubscribed you!

Share listserv messages as appropriate, but clip off the unsubscribe link before hitting “send”!





Viewing messages/seeing lists

- Create a password by visiting:
<http://listserv.ksde.org/scripts/wa.exe?GETPW1=>
- The minimum password length is 6 characters. You should then see a screen telling you a confirmation email was sent to your email address. Click the link in that email to confirm the password.
- Once you've confirmed, you'll be able to see which lists you're subscribed to and access past messages.



When in doubt with a
listserv question:

Evelyn Alden
ealden@ksde.org
(785) 296-3868

The Kansas State Department of Education does not discriminate on the basis of race, color, national origin, sex, disability or age in its programs and activities and provides equal access to the Boy Scouts and other designated youth groups. The following person has been designated to handle inquiries regarding the nondiscrimination policies: KSDE General Counsel, Office of General Counsel, KSDE, Landon State Office Building, 900 S.W. Jackson, Suite 102, Topeka, KS 66612, (785) 296-3201.



Categorical Aid Reminders

- Stay on top of KSDE license applications. “In process” applications need to be watched closely. The status date is the last time the file had activity. Teacher licensure has the option of deleting an application after 90 days of inactivity.
Teacher licensure consultants:
<https://www.ksde.org/Default.aspx?tabid=820>
- Every error should be checked and someone in the district should know how it will be addressed. Discrepancies should also be looked at.
[Errors, Discrepancies, and Substitutes \(ksde.org\)](#) is a guide that might help, and I’m available by email.
- Now is the time to plan substitute use to maximize reimbursement and limit the impact on students. February is too late to maximize reimbursement!



Reimbursement deadlines

- December 1st - Second payment deadline to update data. Pays on **CLAIMED** FTE
- February 1st – Final Waiver deadline for year (please submit waivers as soon as possible)
- March 1st – Third payment deadline to update data. Pays on **ELIGIBLE** FTE

Please use the time between now and March 1st wisely. Email me if you want to set up time for a call or zoom or just want the answer to a question!



Authenticated Applications

Problems logging in or creating account:

helpdesk@ksde.org

(785) 296-7935

CAPS questions/issues:

caps@ksde.org



Categorical Aid page

<https://www.ksde.org/Default.aspx?tabid=538>

Catastrophic/Non-Public Equivalency

Mason Vosburgh

mvosburgh@ksde.org

(785) 296-4945

Transportation/Medicaid Replacement

Sara Barnes sbarnes@ksde.org

(785) 296-4972

Special Teacher Reimbursement

Evelyn Alden ealden@ksde.org

(785) 296-3868

The Kansas State Department of Education does not discriminate on the basis of race, color, national origin, sex, disability or age in its programs and activities and provides equal access to the Boy Scouts and other designated youth groups. The following person has been designated to handle inquiries regarding the nondiscrimination policies: KSDE General Counsel, Office of General Counsel, KSDE, Landon State Office Building, 900 S.W. Jackson, Suite 102, Topeka, KS 66612, (785) 296-3201.