

## QPA Advisory Council Represents:

- All state board regions
- Teachers – all levels
- Administration – bldg and district
- Organizations – parents, teachers, boards
- Schools – USDs, private/religious
- Classified staff
- Business/industry

*Leadership and support for Quality Learning*  
**Kansas**  
state department of  
**Education**

## Section 1

### Purpose of Accreditation



### Purpose of Accreditation:

To ensure the quality and continuing improvement of Kansas education systems' capacity to lead schools in producing college and career ready graduates.



## Defining “College and Career-Ready”

“College and Career Ready means an individual has the academic preparation, cognitive preparation, technical skills, and employability skills to be successful in postsecondary education, in the attainment of an industry recognized certification, or in the workforce—without the need for remediation.”

**CCR = ACTE**



Kansas State Board of Education. Meeting Minutes.  
December 11, 2012. Retrieved from <http://ksde.org>.

## Measuring “College and Career-Ready”



**CCR = ACTE**



## Section 2

# Strengths of a District-Level Systems Accreditation Model



## Systemic Change Means...

- working with school *systems* – districts and departments of education.
- working with every school in a system.
- working with every aspect of a school system.
- systematic – horizontal and vertical structures necessary.
- fundamental change – structural and/or paradigmatic.



Michael Holzman. "What Is Systemic Change?"  
*Educational Leadership* 51.1 (1993): 18. Print.

## Strengths of District-Level Model...

- Based on definitively researched systems theory
- Addresses significant role of district leadership in school quality
- Promotes district's accountability for all its schools
- Promotes horizontal and vertical alignment
- Promotes collaboration rather than competition
- Promotes economical use of district resources
- Increases local board involvement
- Increases involvement of broader community



## Other States Accrediting Districts:

- Arkansas\*
- Colorado
- Mississippi\*
- Missouri
- New Mexico\*
- South Carolina
- Texas
- Wyoming

\*Accredits districts and schools.



Wixom, Micah Ann. "States moving from accreditation to accountability." (2014) Education Commission of the States:  
Retrieved from [www.ecs.org](http://www.ecs.org).

## Section 3

### Readiness in the Field



## The Field Expects District Level

- KSDE (2011) “The new model...maintains an emphasis on the results that schools achieve, but places a larger emphasis on the systems and practices that schools use to gain their results.”
- KSDE (2011) “The new model uses the 21<sup>st</sup> Century themes of: Relationships, Relevance, Responsive Culture, Results and Rigor (five R’s) as a way to focus on the quality characteristics of a school system.”



KSDE (2011) retrieved from <http://community.ksde.org/Default.aspx?alias=community.ksde.org/learn21>.

## The Field Approves of District Level

- Superintendents' Sub-Committee on Accreditation (10-2-2014):  
 "We are ready."  
 "We *prefer* the district model."
- QPA Advisory Council, representing the various roles and expertise in the field, researched, developed, and fully recommends district approach.



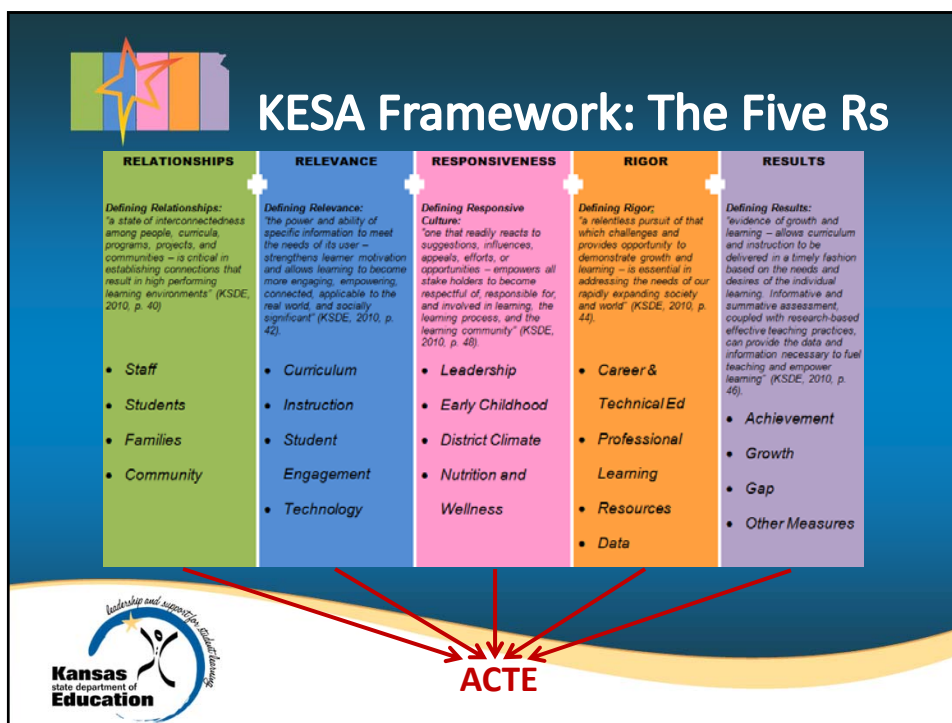
KSDE (2011) retrieved from <http://community.ksde.org/Default.aspx?alias=community.ksde.org/learn21>.

## Section 4 Kansas Education Systems Accreditation: The Five Rs



Proposed New Accreditation Model  
for Kansas





## Rubrics

Schools and districts are scored on every component of each of the 5 Rs. Scores are based on data and evidence.

### Evidence-Based Rubric Scores:



[Click here to view rubrics on KSDE.org.](http://ksde.org)



## Proposed KESA Model

- District receives rating; school data on dashboard
- Ratings recognize levels of quality
- Five-year cycle
- Building Teams make it happen
- District Team leads the way – evaluates, approves, guides throughout the process.
- Stakeholder Team provides insights and feedback throughout process
- Outside Validation Team guides, evaluates, validates throughout process



## KESA Process - Overview



## Outside Validation Team

- Operates at district level.
- Mandatory on-site visit in Year Five.
- OVT members are trained through KSDE.
- Size of team depends somewhat on size of district.
- Members live in region.
- Various levels of teachers and admin (PK-2, 3-5, 6-8, 9-13), subject areas, and areas of expertise are represented.
- Team is as diverse as possible.



## Accreditation Ratings or Levels

- ❖ Accredited with Distinction
- ❖ Accredited with Excellence
- ❖ Accredited with Progress
- ❖ Accredited
- ❖ Provisionally Accredited
- ❖ Not Accredited
- ❖ Transitional ratings  
(Approaching “Accredited with \_\_\_\_”)



## After the Ratings

Based on ratings, State Board would....

- Celebrate “Distinction” and “Excellence.”
- Acknowledge “Progress.”
- Assist “Provisionally.”
- Appoint state team to oversee “Not Accredited.”



## Section 5

### Transparency: The “Dashboard”



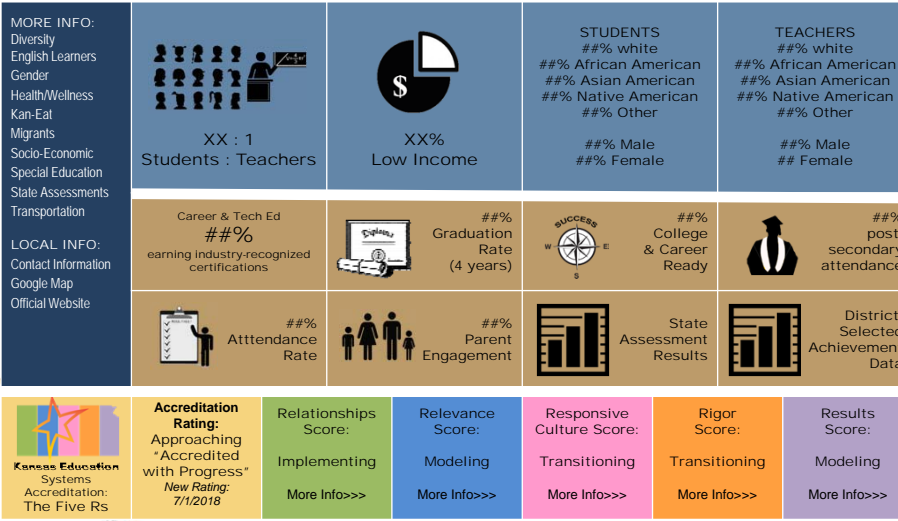
## District KSDE Dashboard

- District overall demographic overview
- District overall results on state- and federally-mandated data points
- Results on district-selected data points
- District overall accreditation rating, data points, and process details



▼ View individual schools in this district.

### USD #XYZ Sunnyside District Overview



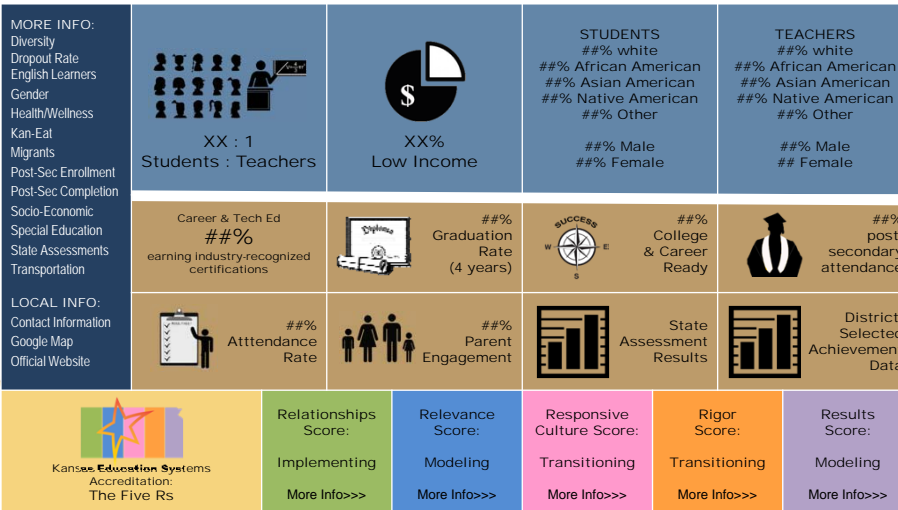
## School KSDE Dashboard

- Set up same as district dashboard
- Individual school's demographic overview
- Individual school's state- and federally-mandated results
- Individual school's data on district-selected data points
- Individual school's accreditation data and process details



▼ View individual schools' or district's page.

### Sunnytown Elementary School Overview



## Section 6

### Moving Forward



#### Draft Timeline for Approval

FALL/WNTR 2014	submit regulations for vetting process
FALL 2015	present regulations to State Board as Receive Item
FALL/WNTR 2015	State Board approval at regular meeting
WNTR '15 - SMR '16	Prepare field for implementation
JULY 2016	First formal cycle begins for all districts
MAY 2018	Group 1 districts receive official ratings
MAY 2019	Group 2 districts receive official ratings



## For more information

- Bibliography of research
- Invitation from AdvancED
- Contact Brad, Scott, Bill, or Kelly



### **Dr. Scott Myers, Director**

Teacher Licensure & Accreditation  
785-296-8010  
[smyers@ksde.org](mailto:smyers@ksde.org)

### **Bill Bagshaw, Assistant Director**

Teacher Licensure & Accreditation  
785-296-2198  
[bbagshaw@ksde.org](mailto:bbagshaw@ksde.org)

### **Kelly Slaton, Education Program Consultant**

Teacher Licensure & Accreditation  
785-368-7356  
[kslaton@ksde.org](mailto:kslaton@ksde.org)

